

Product datasheet for **AP26054PU-S**

Cryptochrome I (CRY1) (551-555) Rabbit Polyclonal Antibody

Product data:

Product Type:	Primary Antibodies
Applications:	WB
Recommended Dilution:	Western blot: 1/500-1/1000.
Reactivity:	Mouse
Host:	Rabbit
Clonality:	Polyclonal
Immunogen:	Peptide sequence around aa.551~555 (S-Q-G-S-G) derived from Human CRY1.
Specificity:	This antibody detects endogenous level of total CRY1 protein.
Formulation:	Phosphate buffered saline (without Mg ²⁺ and Ca ²⁺), pH 7.4, 150mM NaCl and 50% glycerol State: Aff - Purified State: Liquid purified Ig fraction Preservative: 0.02% Sodium Azide
Concentration:	lot specific
Purification:	Affinity Chromatography using epitope-specific peptide
Conjugation:	Unconjugated
Storage:	Store undiluted at 2-8°C for one month or (in aliquots) at -20°C for longer. Avoid repeated freezing and thawing.
Stability:	Shelf life: one year from despatch.
Predicted Protein Size:	60 kDa (Predicted)
Gene Name:	cryptochrome circadian clock 1
Database Link:	Entrez Gene 12952 Mouse Q16526
Background:	Blue light-dependent regulator of the circadian feedback loop. Inhibits CLOCK NPAS2-ARNTL E box-mediated transcription. Acts, in conjunction with CRY2, in maintaining period length and circadian rhythmicity. Has no photolyase activity. Capable of translocating circadian clock core proteins such as PER proteins to the nucleus. May inhibit CLOCK NPAS2-ARNTL transcriptional activity through stabilizing the unphosphorylated form of ARNTL.
Synonyms:	CRY1, PHLL1

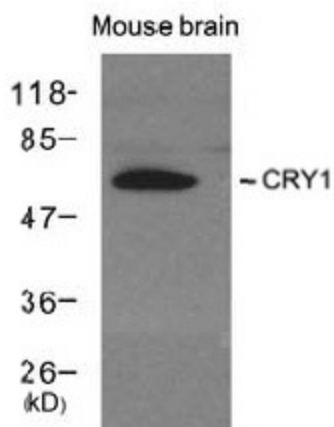


[View online »](#)

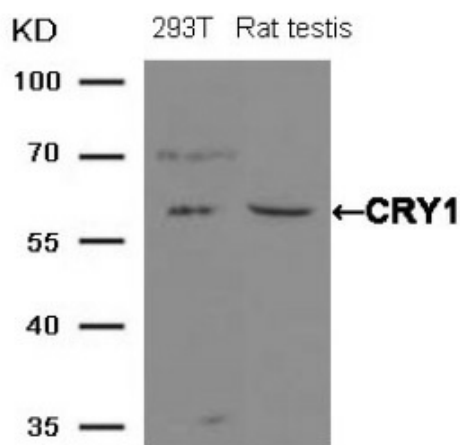
Protein Families: Druggable Genome

Protein Pathways: Circadian rhythm - mammal

Product images:



Western blot analysis of extracts from Mouse brain tissue using CRY1 antibody



Western blot analysis of extracts from 293T cells and Rat testis tissue using CRY1 antibody