

Product datasheet for **AP26053PU-S**

ZCCHC10 (10-14) Rabbit Polyclonal Antibody

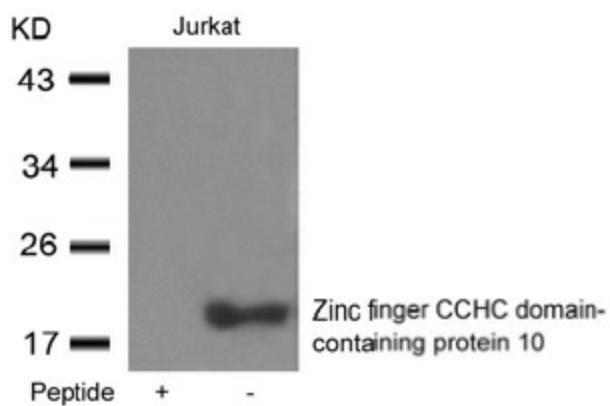
Product data:

Product Type:	Primary Antibodies
Applications:	WB
Recommended Dilution:	Western blot: 1:500 - 1:1000.
Reactivity:	Human, Rat
Host:	Rabbit
Clonality:	Polyclonal
Immunogen:	Peptide sequence around aa 10-14 derived from Human Zinc finger CCHC domain-containing protein 10
Specificity:	This antibody detects endogenous level of total Zinc finger CCHC domain-containing protein 10.
Formulation:	Phosphate buffered saline (without Mg ²⁺ and Ca ²⁺), pH 7.4, 150mM NaCl, 0.02% sodium azide and 50% glycerol State: Aff - Purified State: Liquid Ig fraction
Concentration:	lot specific
Purification:	Affinity-chromatography using epitope-specific peptide
Conjugation:	Unconjugated
Storage:	Store (in aliquots) at -20 °C. Avoid repeated freezing and thawing.
Stability:	Shelf life: one year from despatch.
Gene Name:	zinc finger CCHC-type containing 10
Database Link:	Entrez Gene 360524 Rat Q5EB97
Background:	A member of the family of Zcchc (zinc-finger, CCHC domain-containing protein) proteins. Zcchc contains RNA-interacting motifs, and has been implicated in signalling pathways involved in cytokine expression.
Synonyms:	FLJ20094
Note:	Molecular weight: 20 kDa



[View online »](#)

Product images:



Western blot analysis of extracts from Jurkat cells using Zinc finger CCHC domain-containing protein 10 antibody [AP26053PU-N] and the same antibody preincubated with blocking peptide.