

Product datasheet for **AP26049PU-N**

PROX1 (723-727) Rabbit Polyclonal Antibody

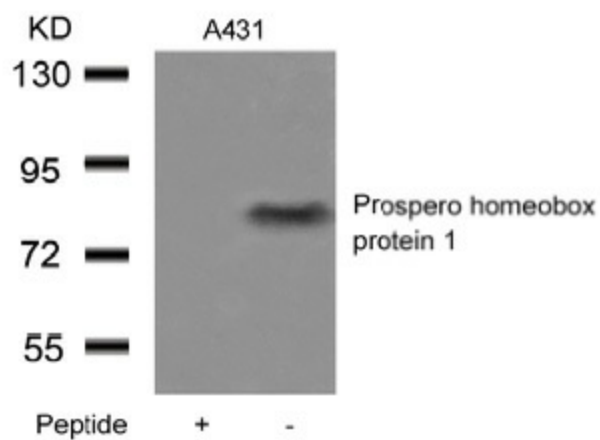
Product data:

Product Type:	Primary Antibodies
Applications:	WB
Recommended Dilution:	Western blot: 1:500 - 1:1000.
Reactivity:	Human, Mouse
Host:	Rabbit
Clonality:	Polyclonal
Immunogen:	Peptide sequence around aa.723~727 derived from Human Prospero homeobox protein 1
Specificity:	This antibody detects endogenous level of total Prospero homeobox protein.
Formulation:	Phosphate buffered saline (without Mg ²⁺ and Ca ²⁺), pH 7.4, 150mM NaCl, 0.02% sodium azide and 50% glycerol State: Aff - Purified State: Liquid Ig fraction
Concentration:	lot specific
Purification:	Affinity-chromatography using epitope-specific peptide
Conjugation:	Unconjugated
Storage:	Store (in aliquots) at -20 °C. Avoid repeated freezing and thawing.
Stability:	Shelf life: one year from despatch.
Gene Name:	prospero homeobox 1
Database Link:	Entrez Gene 19130 Mouse Entrez Gene 5629 Human Q92786
Background:	May play a fundamental role in early development of CNS. May regulate gene expression and development of postmitotic undifferentiated young neurons.
Synonyms:	PROX1
Note:	Molecular weight: 83 kDa
Protein Families:	Embryonic stem cells, ES Cell Differentiation/IPS



[View online »](#)

Product images:



Western blot analysis of extracts from A431 cells using Prospero homeobox protein 1 Antibody and the same antibody preincubated with blocking peptide.