

## Product datasheet for **AP26048PU-S**

### Maged1 (C-term) Rabbit Polyclonal Antibody

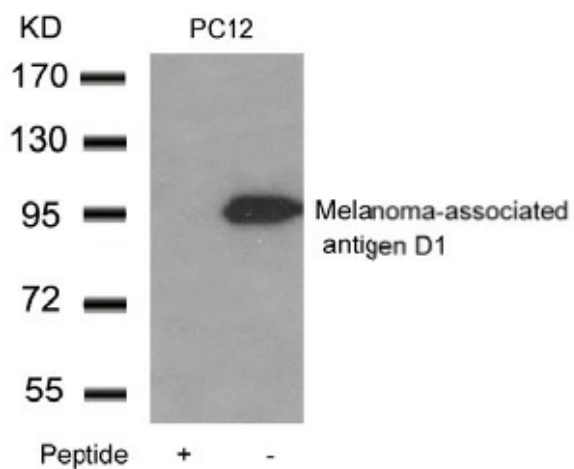
#### Product data:

Product Type:	Primary Antibodies
Applications:	WB
Recommended Dilution:	Western blot: 1:500 - 1:1000.
Reactivity:	Mouse, Rat
Host:	Rabbit
Clonality:	Polyclonal
Immunogen:	Peptide with sequence derived from Mouse Melanoma-associated antigen D1.
Specificity:	This antibody detects endogenous level of total Melanoma-associated antigen D1 protein.
Formulation:	Phosphate buffered saline (without Mg <sup>2+</sup> and Ca <sup>2+</sup> ), pH 7.4, 150mM NaCl, 0.02% sodium azide and 50% glycerol State: Aff - Purified State: Liquid Ig fraction
Concentration:	lot specific
Purification:	Affinity-chromatography using epitope-specific peptide
Conjugation:	Unconjugated
Storage:	Store (in aliquots) at -20 °C. Avoid repeated freezing and thawing.
Stability:	Shelf life: one year from despatch.
Gene Name:	melanoma antigen, family D, 1
Database Link:	<a href="#">Entrez Gene 84469 Rat</a> <a href="#">Entrez Gene 94275 Mouse</a> <a href="#">Q9QYH6</a>
Background:	Involved in the apoptotic response after nerve growth factor (NGF) binding in neuronal cells. Binds p75NTR and antagonizes its association with TrkA, inhibits cell cycle progression, and facilitates p75NTR-mediated apoptosis. May act as a regulator of the function of DLX family members. May regulate p53 transcriptional activity and inhibit cell proliferation. Enhances p53 phosphorylation and accumulation.
Synonyms:	Melanoma-associated antigen D1, MAGED1, NRAGE
Note:	Molecular weight: 95 kDa



[View online »](#)

## Product images:



Western blot analysis of extracts from PC12 cells using Melanoma-associated antigen D1 Antibody and the same antibody preincubated with blocking peptide.