

## Product datasheet for **AP26047PU-N**

### LYVE1 (271-275) Rabbit Polyclonal Antibody

#### Product data:

Product Type:	Primary Antibodies
Applications:	WB
Recommended Dilution:	Western blot: 1:500 - 1:1000.
Reactivity:	Human, Mouse, Rat
Host:	Rabbit
Clonality:	Polyclonal
Immunogen:	Peptide sequence around aa.271~275 derived from Human Lymphatic vessel endothelial hyaluronic acid receptor 1
Specificity:	This antibody detects endogenous level of total Lymphatic vessel endoThislial hyaluronic acid receptor 1 protein.
Formulation:	Phosphate buffered saline (without Mg <sup>2+</sup> and Ca <sup>2+</sup> ), pH 7.4, 150mM NaCl, 0.02% sodium azide and 50% glycerol State: Aff - Purified State: Liquid Ig fraction
Concentration:	lot specific
Purification:	Affinity-chromatography using epitope-specific peptide
Conjugation:	Unconjugated
Storage:	Store (in aliquots) at -20 °C. Avoid repeated freezing and thawing.
Stability:	Shelf life: one year from despatch.
Gene Name:	lymphatic vessel endothelial hyaluronan receptor 1
Database Link:	<a href="#">Entrez Gene 114332 Mouse</a> <a href="#">Entrez Gene 293186 Rat</a> <a href="#">Entrez Gene 10894 Human Q9Y5Y7</a>
Background:	Ligand-specific transporter trafficking between intracellular organelles (TGN) and the plasma membrane. Plays a role in autocrine regulation of cell growth mediated by growth regulators containing cell surface retention sequence binding (CRS). May act as an hyaluronan (HA) transporter, either mediating its uptake for catabolism within lymphatic endothelial cells themselves, or its transport into the lumen of afferent lymphatic vessels for subsequent re-uptake and degradation in lymph nodes.



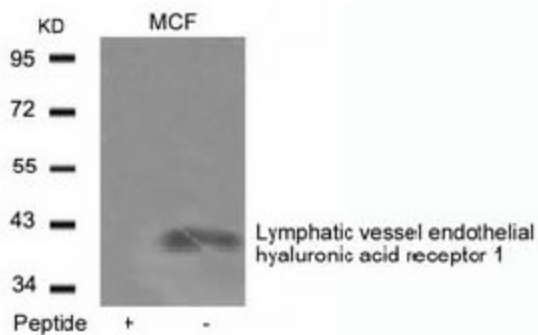
[View online »](#)

**Synonyms:** LYVE1, CRSBP-1, CRSBP1, HAR, XLKD1

**Note:** Molecular weight: 40 kDa

**Protein Families:** Druggable Genome, Transmembrane

### Product images:



Western blot analysis of extracts from MCF cells using Lymphatic vessel endothelial hyaluronic acid receptor 1 Antibody and the same antibody preincubated with blocking peptide.