

## Product datasheet for **AP26043PU-S**

### CKII alpha (CSNK2A1) pThr360/pSer362 Rabbit Polyclonal Antibody

#### Product data:

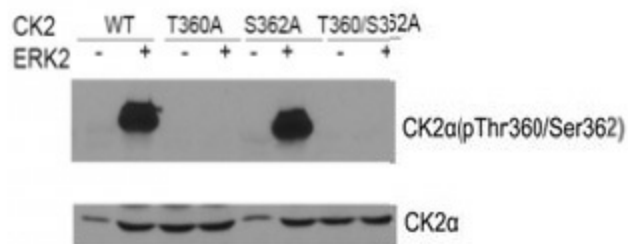
Product Type:	Primary Antibodies
Applications:	WB
Recommended Dilution:	<b>Western blot:</b> 1/1000.
Reactivity:	Human, Mouse, Rat
Host:	Rabbit
Clonality:	Polyclonal
Immunogen:	Peptide sequence around phosphorylation site of Threonine 360/Serine 362
Specificity:	This antibody detects endogenous level of CK2 only when phosphorylated at threonine 360.
Formulation:	PBS (without Mg <sup>2+</sup> and Ca <sup>2+</sup> ), pH 7.4, 150mM NaCl, 0.02% Sodium Azide and 50% Glycerol State: Aff - Purified State: Liquid purified Ig fraction
Concentration:	lot specific
Purification:	Affinity Chromatography using epitope-specific peptide
Conjugation:	Unconjugated
Storage:	Upon receipt, store undiluted (in aliquots) at -20°C. Avoid repeated freezing and thawing.
Stability:	Shelf life: one year from despatch.
Gene Name:	casein kinase 2 alpha 1
Database Link:	<a href="#">Entrez Gene 12995 Mouse</a> <a href="#">Entrez Gene 116549 Rat</a> <a href="#">Entrez Gene 1457 Human</a> <a href="#">P68400</a>
Background:	Casein kinases are operationally defined by their preferential utilization of acidic proteins such as caseins as substrates. The alpha and alpha' chains contain the catalytic site. Participates in Wnt signaling. CK2 phosphorylates 'Ser-392' of p53/TP53 following UV irradiation.
Synonyms:	CSNK2A1, CK2A1, CK II alpha
Note:	Molecular weight: 42 kDa
Protein Families:	Druggable Genome, ES Cell Differentiation/IPS, Protein Kinase



[View online »](#)

**Protein Pathways:** Adherens junction, Tight junction, Wnt signaling pathway

**Product images:**



Western blot of CK2α (Phospho- Thr360/Ser362) antibody and CK2α antibody in vitro kinase assay. Both purified ERK2 and CK2 were used. CK2α (Phospho-Thr360/Ser362) antibody could recognize ERK2 phosphorylated wild type CK2α and CK2α when Ser362 was mutated to alanine.