

Product datasheet for **AP26041PU-N**

Cdc25b pSer149 Rabbit Polyclonal Antibody

Product data:

| | |
|-----------------------|--|
| Product Type: | Primary Antibodies |
| Applications: | WB |
| Recommended Dilution: | Western blot: 1:500 - 1:1000. |
| Reactivity: | Mouse, Rat |
| Host: | Rabbit |
| Clonality: | Polyclonal |
| Immunogen: | Peptide sequence around phosphorylation site of Serine 149 derived from Mouse Cdc25B. |
| Specificity: | This antibody detects endogenous level of Cdc25B protein only when phosphorylated at serine 149. |
| Formulation: | Phosphate buffered saline (without Mg ²⁺ and Ca ²⁺), pH 7.4, 150mM NaCl, 0.02% sodium azide and 50% glycerol State: Aff - Purified State: Liquid Ig fraction |
| Concentration: | lot specific |
| Purification: | Affinity-chromatography using epitope-specific peptide |
| Conjugation: | Unconjugated |
| Storage: | Store (in aliquots) at -20 °C. Avoid repeated freezing and thawing. |
| Stability: | Shelf life: one year from despatch. |
| Gene Name: | cell division cycle 25B |
| Database Link: | Entrez Gene 171103 Rat Entrez Gene 12531 Mouse P30306 |
| Background: | Cdc25B is a member of the CDC25 family of phosphatases. CDC25B activates the cyclin dependent kinase CDC2 by removing two phosphate groups and it is required for entry into mitosis. CDC25B shuttles between the nucleus and the cytoplasm due to nuclear localization and nuclear export signals. The protein is nuclear in the M and G1 phases of the cell cycle and moves to the cytoplasm during S and G2. CDC25B has oncogenic properties, although its role in tumor formation has not been determined. Multiple transcript variants for this gene exist. |

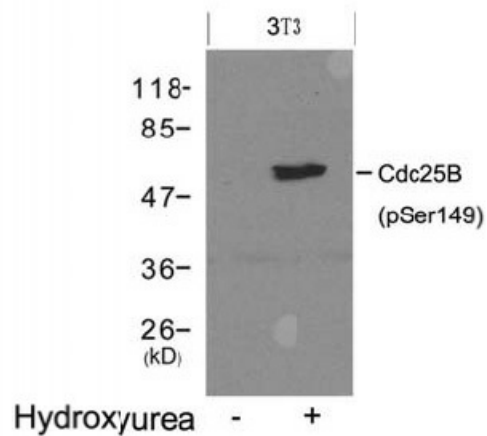


[View online »](#)

Synonyms: CDC25HU2

Note: Molecular weight: 62

Product images:



Western blot analysis of extracts from 3T3 cells untreated (lane 1) or treated with Hydroxyurea (lane 2) using Cdc25B (Phospho-Ser149) Antibody.