

Product datasheet for **AP26038PU-S**

IGF1 Receptor (IGF1R) pTyr1280 Rabbit Polyclonal Antibody

Product data:

Product Type:	Primary Antibodies
Applications:	WB
Recommended Dilution:	Western blot: 1:500~1:1000.
Reactivity:	Human, Mouse, Rat
Host:	Rabbit
Clonality:	Polyclonal
Immunogen:	Peptide sequence around phosphorylation site of tyrosine 1280 (S-F-Y(p)-Y-S) derived from Human IGF-1R
Specificity:	This antibody detects endogenous levels of IGF-1R only when phosphorylated at tyrosine 1280.
Formulation:	Phosphate buffered saline (without Mg ²⁺ and Ca ²⁺), pH 7.4, 150mM NaCl, 0.02% sodium azide and 50% glycerol State: Aff - Purified State: Liquid Ig fraction
Concentration:	lot specific
Purification:	Affinity-chromatography using epitope-specific peptide
Conjugation:	Unconjugated
Storage:	Store (in aliquots) at -20 °C. Avoid repeated freezing and thawing.
Stability:	Shelf life: one year from despatch.
Gene Name:	insulin like growth factor 1 receptor
Database Link:	Entrez Gene 16001 Mouse Entrez Gene 25718 Rat Entrez Gene 3480 Human P08069



[View online »](#)

Background:

This receptor binds insulin-like growth factor 1 (IGF1) with a high affinity and IGF2 with a lower affinity. It has a tyrosine-protein kinase activity, which is necessary for the activation of the IGF1-stimulated downstream signaling cascade. When present in a hybrid receptor with INSR, binds IGF1. Ref.19 shows that hybrid receptors composed of IGF1R and INSR isoform Long are activated with a high affinity by IGF1, with low affinity by IGF2 and not significantly activated by insulin, and that hybrid receptors composed of IGF1R and INSR isoform Short are activated by IGF1, IGF2 and insulin. In contrast, Ref.21 shows that hybrid receptors composed of IGF1R and INSR isoform Long and hybrid receptors composed of IGF1R and INSR isoform Short have similar binding characteristics, both bind IGF1 and have a low affinity for insulin.

Synonyms:

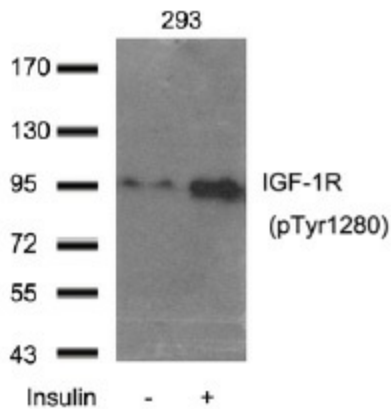
IGF-I receptor, IGF1 Receptor

Protein Families:

Druggable Genome, Protein Kinase, Transmembrane

Protein Pathways:

Adherens junction, Colorectal cancer, Endocytosis, Focal adhesion, Glioma, Long-term depression, Melanoma, Oocyte meiosis, Pathways in cancer, Progesterone-mediated oocyte maturation, Prostate cancer

Product images:

Western blot analysis of extract from 293 cells using IGF-1R (Phospho-Tyr1280) Antibody.