

## Product datasheet for **AP26037PU-S**

### Ephrin B2 (EFNB2) pTyr330 Rabbit Polyclonal Antibody

#### Product data:

Product Type:	Primary Antibodies
Applications:	WB
Recommended Dilution:	Western blot: 1:500~1:1000.
Reactivity:	Human, Mouse
Host:	Rabbit
Clonality:	Polyclonal
Immunogen:	Peptide sequence around phosphorylation site of tyrosine 330 derived from Human Ephrin-B2
Specificity:	This antibody detects endogenous levels of Ephrin-B2 only when phosphorylated at tyrosine 330.
Formulation:	Phosphate buffered saline (without Mg <sup>2+</sup> and Ca <sup>2+</sup> ), pH 7.4, 150mM NaCl, 0.02% sodium azide and 50% glycerol State: Aff - Purified State: Liquid Ig fraction
Concentration:	lot specific
Purification:	Affinity-chromatography using epitope-specific peptide
Conjugation:	Unconjugated
Storage:	Store (in aliquots) at -20 °C. Avoid repeated freezing and thawing.
Stability:	Shelf life: one year from despatch.
Gene Name:	ephrin B2
Database Link:	<a href="#">Entrez Gene 13642 Mouse</a> <a href="#">Entrez Gene 1948 Human</a> <a href="#">P52799</a>



[View online »](#)

**Background:**

Adducins are a family of cytoskeleton proteins encoded by three genes (alpha, beta, gamma). Adducin is a heterodimeric protein that consists of related subunits, which are produced from distinct genes but share a similar structure. Alpha- and beta-adducin include a protease-resistant N-terminal region and a protease-sensitive, hydrophilic C-terminal region. Alpha- and gamma-adducins are ubiquitously expressed. In contrast, beta-adducin is expressed at high levels in brain and hematopoietic tissues. Adducin binds with high affinity to Ca(2+)/calmodulin and is a substrate for protein kinases A and C. Alternative splicing results in multiple variants encoding distinct isoforms; however, not all variants have been fully described.

**Synonyms:**

EFNB2, EPLG5, HTKL, LERK5, HTK-L, LERK-5, HTK ligand

**Note:**

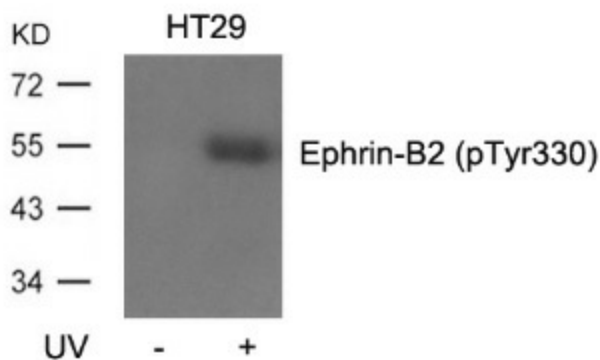
Molecular weight: 37 kDa

**Protein Families:**

Druggable Genome, Transmembrane

**Protein Pathways:**

Axon guidance

**Product images:**


Western blot analysis of extracts from HT29 cells, untreated or treated with UV using Ephrin-B2 (Phospho-Tyr330) Antibody.