

Product datasheet for **AP26030PU-N**

Kitl Rabbit Polyclonal Antibody

Product data:

| | |
|------------------------|---|
| Product Type: | Primary Antibodies |
| Applications: | WB |
| Recommended Dilution: | Western blot: 2-5 µg/ml. |
| Reactivity: | Human, Mouse |
| Host: | Rabbit |
| Isotype: | IgG |
| Clonality: | Polyclonal |
| Immunogen: | Highly pure (> 95%) recombinant Mouse SCF (Lys26-Ala189) derived from E. coli (Cat.-No AR26008PU-N) |
| Specificity: | This antibody detects KITLG / SCF. |
| Formulation: | PBS, pH 7.2 State: Purified State: Lyophilized purified Ig fraction |
| Reconstitution Method: | Centrifuge vial prior to opening. Reconstitute in sterile water to a concentration of 0.1-1.0 mg/ml. |
| Purification: | Protein A Chromatography |
| Conjugation: | Unconjugated |
| Storage: | Store lyophilized at 2-8°C for 6 months or at -20°C long term. After reconstitution store the antibody undiluted at 2-8°C for one month or (in aliquots) at -20°C long term. Avoid repeated freezing and thawing. |
| Stability: | Shelf life: one year from despatch. |
| Gene Name: | kit ligand |
| Database Link: | Entrez Gene 17311 Mouse P20826 |



[View online »](#)

Background:

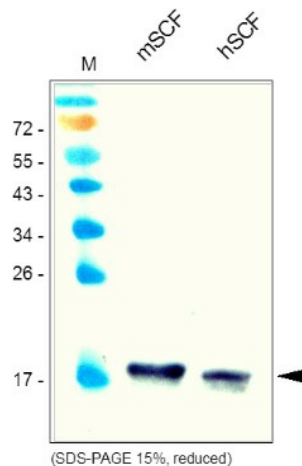
Stem cell factor (SCF), also known as ckit ligand (KL), mast cell growth factor (MGF), and steel factor (SLF), is a widely expressed 28-40 kDa type I transmembrane glycoprotein (1). It promotes the survival, differentiation, and mobilization of multiple cell types including myeloid, erythroid, megakaryocytic, lymphoid, germ cell, and melanocyte progenitors (1-7). SCF is a primary growth and activation factor for mast cells and eosinophils (8). Mature mouse SCF consists of a 189 amino acid (aa) extracellular domain (ECD), a 23 aa transmembrane segment, and a 36 aa cytoplasmic tail (9). The ECD shows both N-linked and O-linked glycosylation (10). Proteolytic cleavage at two alternate sites in the extracellular juxtamembrane region releases a 25 kDa soluble molecule which is comparable to the only form produced by Steel-dickie mutant mice (11, 12). An alternately spliced isoform of mouse SCF lacks 28 aa that encompasses the primary proteolytic recognition site (13). Within the ECD of the short isoform (corresponding to this recombinant protein), mouse SCF shares 93% aa sequence identity with rat SCF and 72% 75% with canine, feline, and human SCF. Rat SCF is active on mouse and human cells, but human SCF is only weakly active on mouse cells (14). Noncovalent dimers of transmembrane or soluble SCF interact with the receptor tyrosine kinase SCF R/ckit to trigger receptor dimerization and signaling (15). SCF assists in the recovery of cardiac function following myocardial infarction by increasing the number of cardiomyocytes and vascular channels (16).

Synonyms:

KITL, Kit ligand, c-Kit ligand, Stem cell factor, Mast cell growth factor, MGF

Note:

Endotoxin level: < 0.1 EU/1µg of the antibody (LAL)

Product images:

Western Analysis of anti-Mouse SCF. Samples were loaded in 15% SDS-polyacrylamide gel under reducing conditions. Lane 1: MWM (kDa); lane 2: rm SCF; lane 3: rh SCF.