

Product datasheet for **AP24003PU-N**

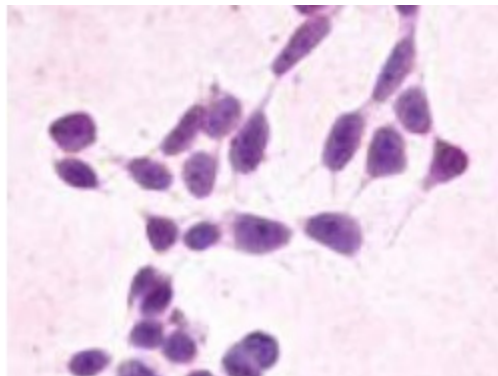
XPR1 (N-term) Rabbit Polyclonal Antibody

Product data:

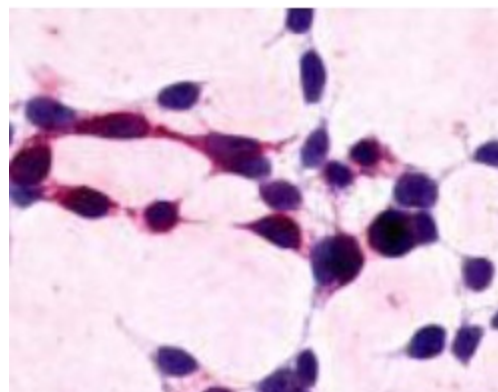
Product Type:	Primary Antibodies
Applications:	IF, IHC
Recommended Dilution:	Immunocytochemistry: 8 - 15 µg/ml. Immunohistochemistry on Paraffin Sections: 8 µg/ml.
Reactivity:	Bovine, Bat, Canine, Chicken, Equine, Hamster, Human, Monkey, Mouse, Porcine, Rabbit, Rat
Host:	Rabbit
Clonality:	Polyclonal
Immunogen:	Synthetic 16 amino acid peptide from the N-terminal cytoplasmic domain of human XPR1.
Specificity:	This antibody reacts to N-terminal cytoplasmic domain of Xenotropic And Polytopic Retrovirus Receptor (XPR1). Human XPR1 BLAST analysis of the peptide immunogen showed no homology with other human proteins.
Formulation:	PBS containing 0.09% Sodium Azide as preservative State: Aff - Purified State: Liquid purified Ig fraciton
Concentration:	lot specific
Purification:	Immunoaffinity Chromatography
Conjugation:	Unconjugated
Storage:	Store the antibody undiluted at 2-8°C for month or (in aliquots) at -20°C to -70°C for longer. Avoid repeated freezing and thawing.
Stability:	Shelf life: One year from despatch.
Gene Name:	xenotropic and polytopic retrovirus receptor 1
Database Link:	Entrez Gene 19775 Mouse Entrez Gene 289424 Rat Entrez Gene 9213 Human Q9UBH6
Background:	May function in G-protein coupled signal transduction (By similarity). Potential receptor for xenotropic and polytopic murine leukemia retroviruses.
Synonyms:	X-receptor, XR, SYG1
Protein Families:	Druggable Genome, Transmembrane



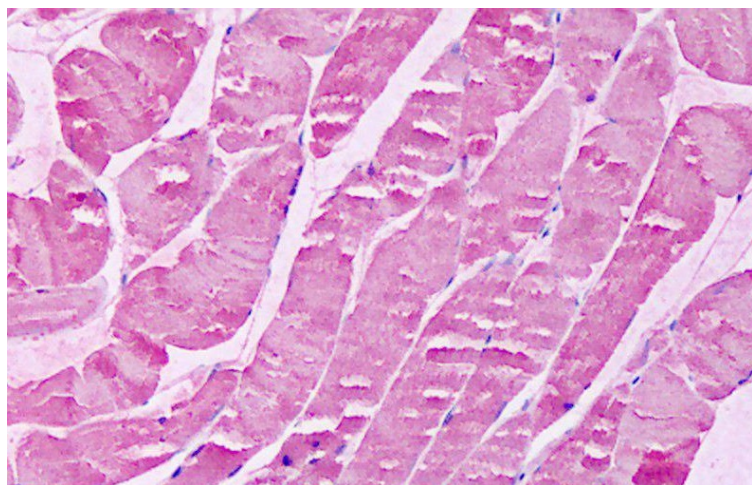
[View online »](#)

Product images:

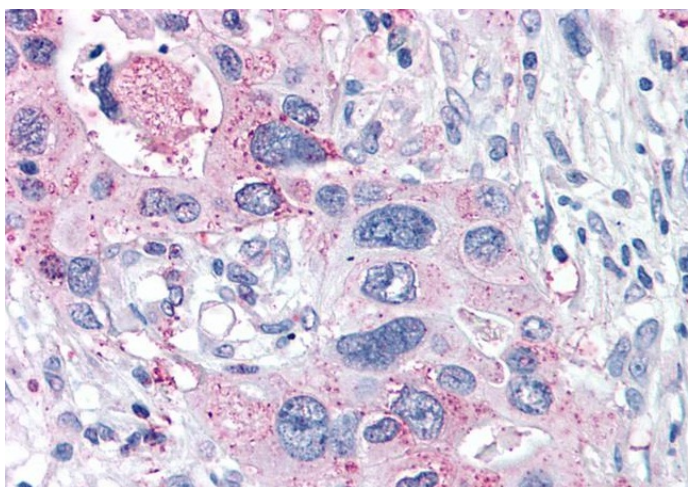
Cells expressing vector only - immunostained with AP24003PU-N XPR1-antibody



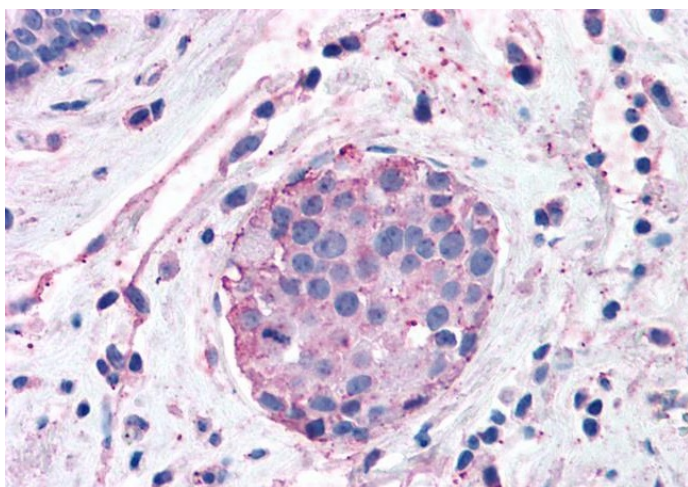
Cells expressing target protein - immunostained with AP24003PU-N XPR1-antibody



Anti-XPR1 antibody: IHC of human skeletal muscle. Immunohistochemistry of formalin-fixed, paraffin-embedded tissue after heat-induced antigen retrieval. Antibody dilution 8 ug/ml.



Anti-XPR1 antibody: IHC of human Pancreas, Carcinoma. Immunohistochemistry of formalin-fixed, paraffin-embedded tissue after heat-induced antigen retrieval.



Anti-XPR1 antibody: IHC of human Breast, Carcinoma. Immunohistochemistry of formalin-fixed, paraffin-embedded tissue after heat-induced antigen retrieval.