

Product datasheet for **AP23996PU-N**

SLC12A1 (43-57) Goat Polyclonal Antibody

Product data:

Product Type:	Primary Antibodies
Applications:	IHC
Recommended Dilution:	Immunohistochemistry on Paraffin Sections: 3.75 - 7.5 µg/ml.
Reactivity:	Human, Monkey
Host:	Goat
Isotype:	IgG
Clonality:	Polyclonal
Immunogen:	Synthetic peptide from positions 43-57 of human SLC12A1 (NP_000329.2)
Specificity:	This antibody reacts to Solute Carrier Family 12 (Sodium/Potassium/Chloride Transporters), Member 1 (SLC12A1) at aa 43-57.
Formulation:	Tris saline buffer, pH 7.3 containing 0.5% BSA as stabilizer and 0.02% sodium azide as preservative State: Aff - Purified State: Liquid purified Ig fraction
Concentration:	lot specific
Purification:	Immunoaffinity Chromatography
Conjugation:	Unconjugated
Storage:	Upon receipt, store undiluted (in aliquots) at -20°C. Avoid repeated freezing and thawing.
Stability:	Shelf life: one year from despatch.
Gene Name:	solute carrier family 12 member 1
Database Link:	Entrez Gene 6557 Human Q13621
Background:	The sodium-potassium-chloride cotransporter isoform 2 is kidney-specific and is found on the apical membrane of the thick ascending limb of Henle's loop and the macula densa. It accounts for most of the NaCl resorption with the stoichiometry of 1Na:1K:2Cl and is sensitive to such diuretics as furosemide and bumetanide. Some Bartter-like syndromes result from defects in this gene.

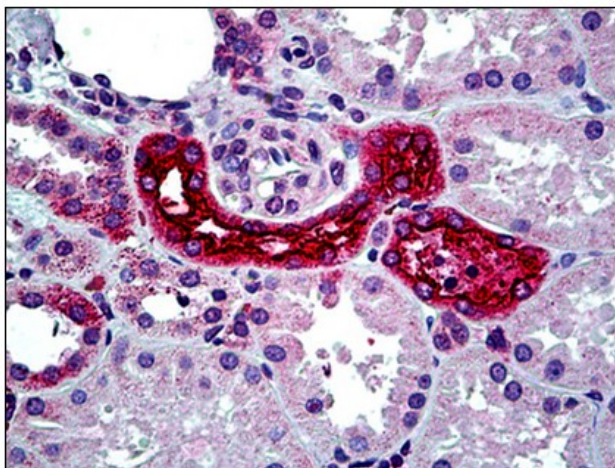


[View online »](#)

Synonyms: NKCC2

Protein Families: Druggable Genome, Transmembrane

Product images:



Human Kidney: Formalin-Fixed, Paraffin-Embedded (FFPE)