

## Product datasheet for **AP23995PU-N**

### ITK (596-607) Goat Polyclonal Antibody

#### Product data:

Product Type:	Primary Antibodies
Applications:	IHC
Recommended Dilution:	<b>Immunohistochemistry on Paraffin Sections:</b> 3.75 - 7.5 µg/ml.
Reactivity:	Human, Monkey
Host:	Goat
Isotype:	IgG
Clonality:	Polyclonal
Immunogen:	Synthetic peptide from positions 596-607 of human ITK (NP_005537.3)
Specificity:	This antibody reacts to Interleukin 2 Tyrosine Kinase (ITK) at aa 596-607.
Formulation:	Tris saline buffer, pH 7.3 containing 0.5% BSA as stabilizer and 0.02% sodium azide as preservative State: Aff - Purified State: Liquid purified Ig fraction
Concentration:	lot specific
Purification:	Immunoaffinity Chromatography
Conjugation:	Unconjugated
Storage:	Upon receipt, store undiluted (in aliquots) at -20°C. Avoid repeated freezing and thawing.
Stability:	Shelf life: one year from despatch.
Gene Name:	IL2 inducible T-cell kinase
Database Link:	<a href="#">Entrez Gene 3702 Human Q08881</a>
Background:	Interleukin-2 tyrosine kinase (ITK), a BTK/TEC type tyrosine kinase, is critical for efficient signaling downstream of the T cell receptor. Itk is directly phosphorylated and activated by Lck. Subsequently, Itk activates phospholipase C-gamma1, leading to calcium mobilization and extracellular signal-regulated kinase/mitogen-activated protein kinase activation. Itk contains five domains in addition to the catalytic domain: pleckstrin homology, Tec homology which contains a proline-rich region, Src homology 3, and Src homology 2.



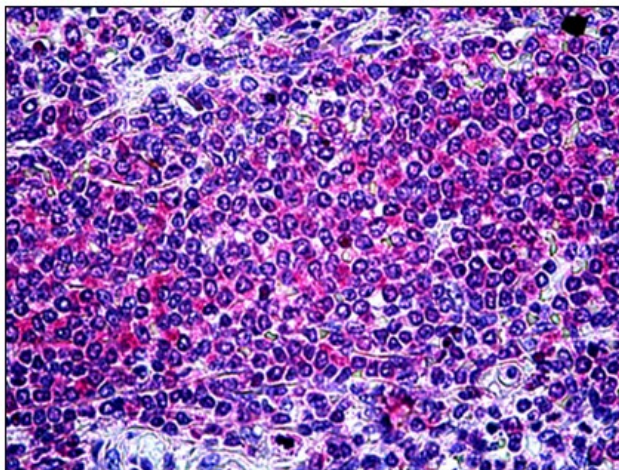
[View online »](#)

**Synonyms:** EMT, LYK

**Protein Families:** Druggable Genome, Protein Kinase

**Protein Pathways:** Chemokine signaling pathway, Leukocyte transendothelial migration, T cell receptor signaling pathway

**Product images:**



Human Spleen: Formalin-Fixed, Paraffin-Embedded (FFPE)