

## Product datasheet for **AP23981PU-N**

### TCF7 (617-631) Goat Polyclonal Antibody

#### Product data:

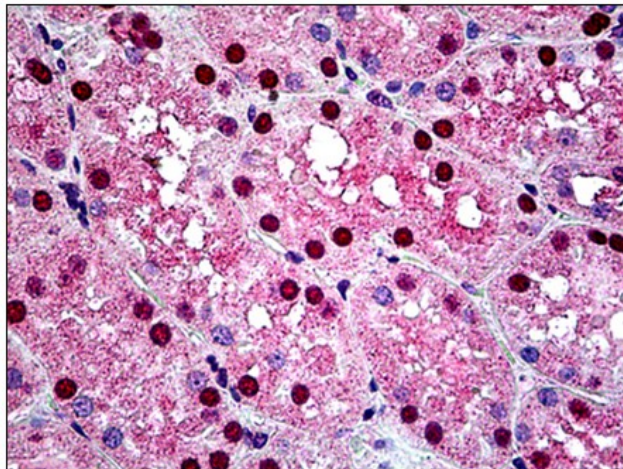
Product Type:	Primary Antibodies
Applications:	IHC
Recommended Dilution:	<b>Immunohistochemistry on Paraffin Sections:</b> 3.75 - 7.5 µg/ml.
Reactivity:	Human, Bat, Canine, Equine, Hamster, Mouse, Porcine, Rat
Host:	Goat
Isotype:	IgG
Clonality:	Polyclonal
Immunogen:	Synthetic peptide from positions 617-631 of human TCF1 (NP_000536.5)
Specificity:	This antibody reacts to HNF1 homeobox A at aa 617-631.
Formulation:	Tris saline buffer, pH 7.3 containing 0.5% BSA as stabilizer and 0.02% sodium azide as preservative State: Aff - Purified State: Liquid purified Ig fraction
Concentration:	lot specific
Purification:	Immunoaffinity Chromatography
Conjugation:	Unconjugated
Storage:	Store the antibody at -20°C. Avoid repeated freezing and thawing.
Stability:	Shelf life: one year from despatch.
Gene Name:	transcription factor 7 (T-cell specific, HMG-box)
Database Link:	<a href="#">Entrez Gene 21414 Mouse</a> <a href="#">Entrez Gene 363595 Rat</a> <a href="#">Entrez Gene 6932 Human P36402</a>
Background:	Transcriptional activator that regulates the tissue specific expression of multiple genes, especially in pancreatic islet cells and in liver. Required for the expression of several liver specific genes. Binds to the inverted palindrome 5'-GTTAATNATTAAC-3'.
Synonyms:	Transcription factor 7, TCF-7, T-cell factor 1, TCF-1
Protein Families:	Druggable Genome, ES Cell Differentiation/IPS, Transcription Factors



[View online »](#)

**Protein Pathways:** Acute myeloid leukemia, Adherens junction, Arrhythmogenic right ventricular cardiomyopathy (ARVC), Basal cell carcinoma, Colorectal cancer, Endometrial cancer, Melanogenesis, Pathways in cancer, Prostate cancer, Thyroid cancer, Wnt signaling pathway

**Product images:**



Human Kidney: Formalin-Fixed, Paraffin-Embedded (FFPE)