

Product datasheet for **AP23976PU-N**

EHD1 (2-15) Goat Polyclonal Antibody

Product data:

Product Type:	Primary Antibodies
Applications:	IHC
Recommended Dilution:	Immunohistochemistry on Paraffin Sections: 3.75 - 7.5 µg/ml.
Reactivity:	Human, Bovine, Bat, Monkey, Mouse, Porcine, Rat
Host:	Goat
Isotype:	IgG
Clonality:	Polyclonal
Immunogen:	Synthetic peptide from positions 2-15 of human EHD1 (NP_006786.2)
Specificity:	This antibody reacts to EH domain-containing protein 1 at aa 2-15.
Formulation:	Tris saline buffer, pH 7.3 containing 0.5% BSA as stabilizer and 0.02% sodium azide as preservative State: Aff - Purified State: Liquid purified Ig fraction
Concentration:	lot specific
Purification:	Immunoaffinity Chromatography
Conjugation:	Unconjugated
Storage:	Upon receipt, store undiluted (in aliquots) at -20°C. Avoid repeated freezing and thawing.
Stability:	Shelf life: one year from despatch.
Gene Name:	EH domain containing 1
Database Link:	<u>Entrez Gene 13660 Mouse</u> <u>Entrez Gene 293692 Rat</u> <u>Entrez Gene 10938 Human Q9H4M9</u>
Background:	Testilin / EHD1 belongs to a highly conserved gene family encoding EPS15 homology (EH) domain-containing proteins. The protein-binding EH domain was first noted in EPS15, a substrate for the epidermal growth factor receptor. The EH domain has been shown to be an important motif in proteins involved in protein-protein interactions and in intracellular sorting. The protein encoded by this gene is thought to play a role in the endocytosis of IGF1 receptors.



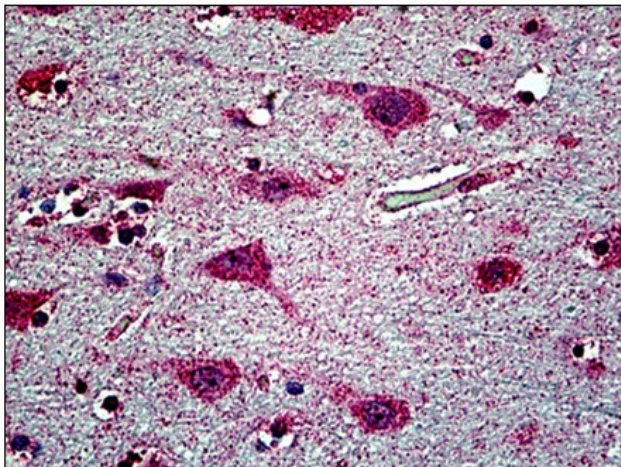
[View online »](#)

Synonyms: PAST, PAST1, PAST homolog 1, hPAST1, Testilin

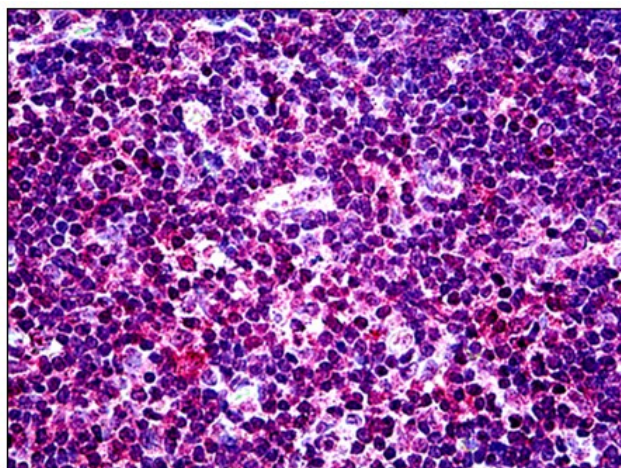
Protein Families: Druggable Genome

Protein Pathways: Endocytosis

Product images:



Human Brain, Cortex: Formalin-Fixed, Paraffin-Embedded (FFPE)



Human Thymus: Formalin-Fixed, Paraffin-Embedded (FFPE)