

## Product datasheet for **AP23971PU-N**

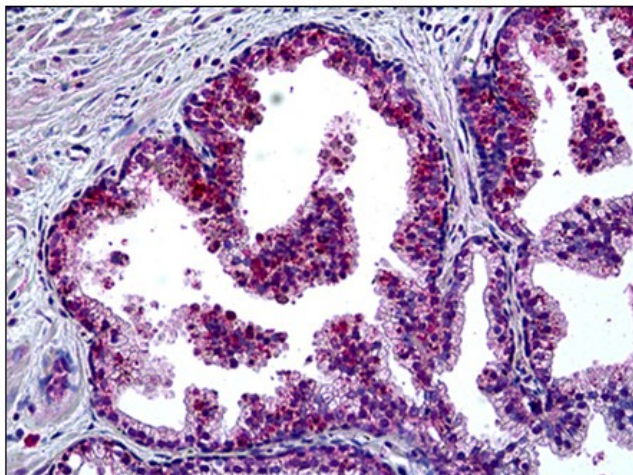
### MSH6 (2-14) Goat Polyclonal Antibody

#### Product data:

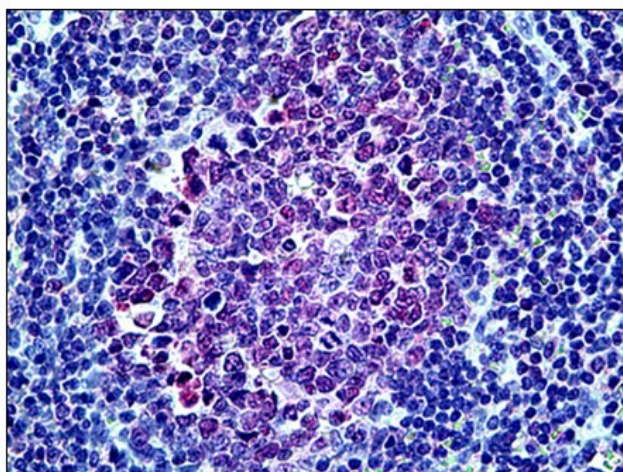
Product Type:	Primary Antibodies
Applications:	IHC
Recommended Dilution:	<b>Immunohistochemistry on Paraffin Sections:</b> 3, 5 - 10 µg/ml.
Reactivity:	Human, Bat, Monkey, Mouse, Rat
Host:	Goat
Isotype:	IgG
Clonality:	Polyclonal
Immunogen:	Synthetic peptide SRQSTLYSFFPKS-C from positions 2-14 of human MSH6 (NP_000170.1).
Specificity:	This antibody reacts to MutS Homolog 6 (MSH6).
Formulation:	Tris saline buffer, pH 7.3 containing 0.5% BSA as stabilizer and 0.02% sodium azide as preservative State: Purified State: Liquid purified Ig fraction
Concentration:	lot specific
Purification:	Immunoaffinity Chromatography
Conjugation:	Unconjugated
Storage:	Store the antibody at -20°C. Avoid repeated freezing and thawing.
Stability:	Shelf life: one year from despatch.
Gene Name:	mutS homolog 6
Database Link:	<a href="#">Entrez Gene 17688 Mouse</a> <a href="#">Entrez Gene 100360342 Rat</a> <a href="#">Entrez Gene 2956 Human P52701</a>
Synonyms:	DNA mismatch repair protein Msh6, GTBP
Protein Families:	Druggable Genome, Stem cell - Pluripotency
Protein Pathways:	Colorectal cancer, Mismatch repair, Pathways in cancer



[View online »](#)

**Product images:**

Human Prostate: Formalin-Fixed, Paraffin-Embedded (FFPE)



Human Tonsil: Formalin-Fixed, Paraffin-Embedded (FFPE)