

Product datasheet for **AP23969PU-N**

EDF1 (2-14) Goat Polyclonal Antibody

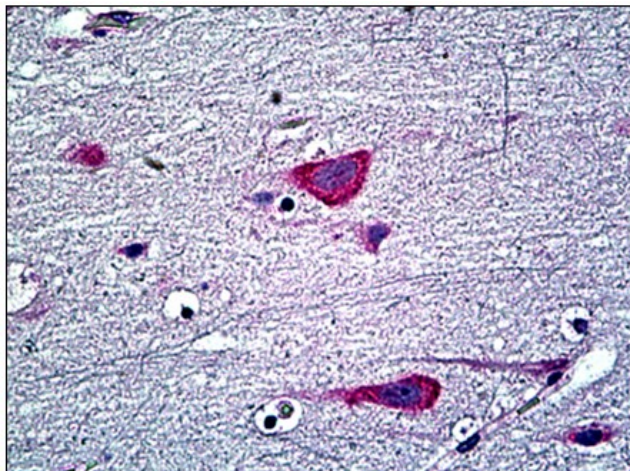
Product data:

Product Type:	Primary Antibodies
Applications:	IHC
Recommended Dilution:	Immunohistochemistry on Paraffin Sections: 3.75 - 7.5 µg/ml.
Reactivity:	Human, Bovine, Canine, Chicken, Monkey, Mouse, Porcine, Rat, Xenopus
Host:	Goat
Isotype:	IgG
Clonality:	Polyclonal
Immunogen:	Synthetic peptide from positions 2-14 of human EDF1 (NP_003783.1)
Specificity:	This antibody reacts to Edf-1 Protein (EDF1) at aa 2-14.
Formulation:	Tris saline buffer, pH 7.3 containing 0.5% BSA as stabilizer and 0.02% sodium azide as preservative State: Aff - Purified State: Liquid purified Ig fraction
Concentration:	lot specific
Purification:	Immunoaffinity Chromatography
Conjugation:	Unconjugated
Storage:	Upon receipt, store undiluted (in aliquots) at -20°C. Avoid repeated freezing and thawing.
Stability:	Shelf life: one year from despatch.
Gene Name:	endothelial differentiation related factor 1
Database Link:	Entrez Gene 59022 Mouse Entrez Gene 296570 Rat Entrez Gene 8721 Human O60869
Background:	Endothelial differentiation-related factor 1 may regulate endothelial cell differentiation.
Synonyms:	MBF1, EDF1
Protein Families:	Druggable Genome, Transcription Factors

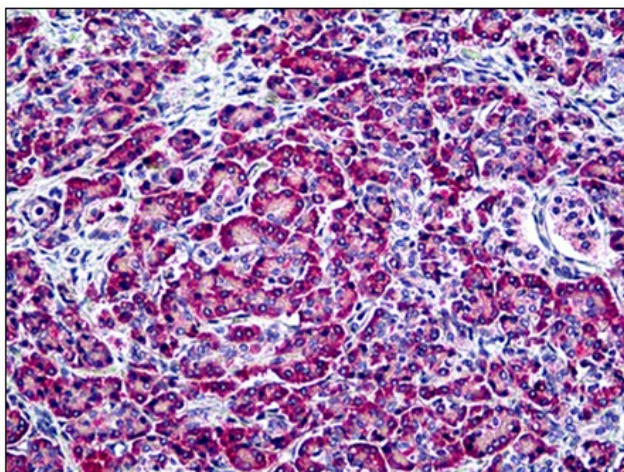


[View online »](#)

Product images:



Human Brain, Cortex: Formalin-Fixed, Paraffin-Embedded (FFPE)



Human Pancreas: Formalin-Fixed, Paraffin-Embedded (FFPE)