

Product datasheet for **AP23961PU-N**

SH3KBP1 (2-14) Goat Polyclonal Antibody

Product data:

Product Type:	Primary Antibodies
Applications:	IHC
Recommended Dilution:	Immunohistochemistry on Paraffin Sections: 2.5 µg/ml.
Reactivity:	Human, Bovine, Canine, Monkey, Mouse, Rabbit, Rat
Host:	Goat
Isotype:	IgG
Clonality:	Polyclonal
Immunogen:	Synthetic peptide from positions 2-14 of human SH3KBP1 (NP_114098.1)
Specificity:	This antibody reacts to C-Cbl-interacting Protein (CIN85) (SH3KBP1). It antibody is expected to recognize isoform a (NP_114098.1) only.
Formulation:	Tris saline buffer, pH 7.3 containing 0.5% BSA as stabilizer and 0.02% sodium azide as preservative State: Aff - Purified State: Liquid purified Ig fraction
Concentration:	lot specific
Purification:	Immunoaffinity Chromatography
Conjugation:	Unconjugated
Storage:	Upon receipt, store undiluted (in aliquots) at -20°C. Avoid repeated freezing and thawing.
Stability:	Shelf life: one year from despatch.
Gene Name:	SH3 domain containing kinase binding protein 1
Database Link:	Entrez Gene 58194 Mouse Entrez Gene 84357 Rat Entrez Gene 30011 Human Q96B97



[View online »](#)

Background:

Adapter protein involved in regulating diverse signal transduction pathways. Involved in the regulation of endocytosis and lysosomal degradation of ligand-induced receptor tyrosine kinases, including EGFR and MET/hepatocyte growth factor receptor, through a association with CBL and endophilins. The association with CBL, and thus the receptor internalization, may inhibited by an interaction with PDCD6IP and/or SPRY2. Involved in regulation of ligand-dependent endocytosis of the IgE receptor.

Synonyms:

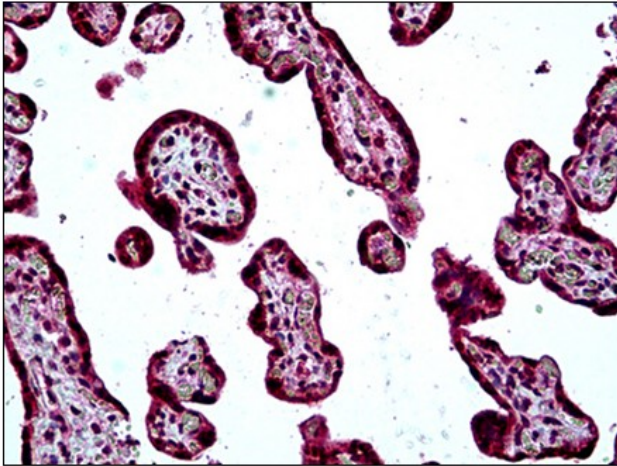
CIN85, HSB-1, CD2BP3

Protein Families:

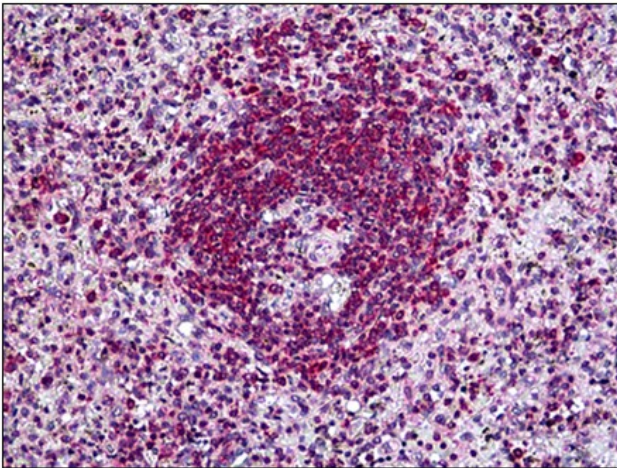
Druggable Genome

Protein Pathways:

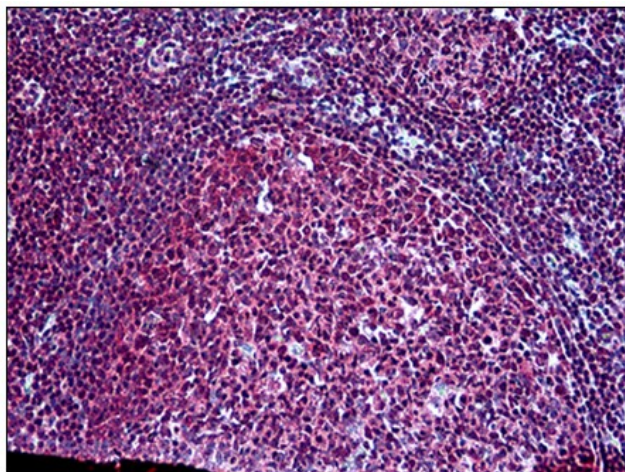
Endocytosis

Product images:

Human Placenta: Formalin-Fixed, Paraffin-Embedded (FFPE)



Human Spleen: Formalin-Fixed, Paraffin-Embedded (FFPE)



Human Tonsil: Formalin-Fixed, Paraffin-Embedded (FFPE)