

## Product datasheet for **AP23960PU-N**

### PARL (N-term) Rabbit Polyclonal Antibody

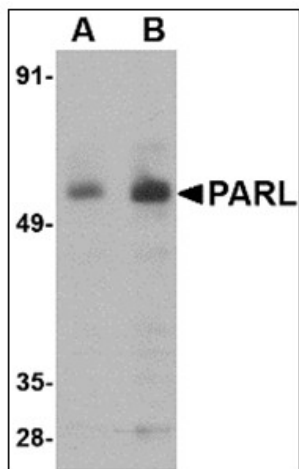
#### Product data:

Product Type:	Primary Antibodies
Applications:	IHC, WB
Recommended Dilution:	<b>Immunohistochemistry on Paraffin Sections:</b> 5 µg/ml. <b>Western Blot:</b> 1 - 2 µg/ml.
Reactivity:	Human, Mouse, Rat
Host:	Rabbit
Isotype:	IgG
Clonality:	Polyclonal
Immunogen:	PARL antibody was raised against a 15 amino acid peptide from near the amino terminus of human PARL.
Specificity:	This antibody reacts to Presenilins Associated Rhomboid-like Protein (PARL).
Formulation:	PBS containing 0.02% sodium azide as preservative State: Purified State: Liquid purified Ig fraction
Concentration:	lot specific
Purification:	Immunoaffinity Chromatography
Conjugation:	Unconjugated
Storage:	Store the antibody undiluted at 2-8°C.
Stability:	Shelf life: one year from despatch.
Gene Name:	presenilin associated rhomboid like
Database Link:	<a href="#">Entrez Gene 287979 Rat</a> <a href="#">Entrez Gene 381038 Mouse</a> <a href="#">Entrez Gene 55486 Human Q9H300</a>
Synonyms:	PSARL, PRO2207
Protein Families:	Protease, Transmembrane

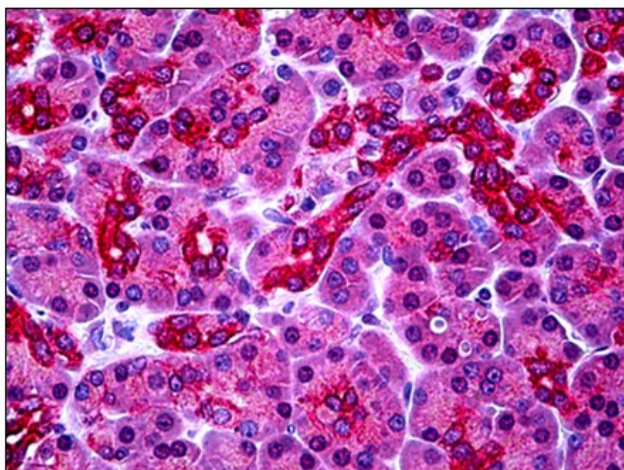


[View online »](#)

## Product images:



Western blot analysis of PARL in 3T3 cell lysate with PARL antibody at (A) 1 and (B) 2 ug/ml.



Human Pancreas: Formalin-Fixed, Paraffin-Embedded (FFPE)