

Product datasheet for **AP23957PU-N**

UBA2 (C-term) Rabbit Polyclonal Antibody

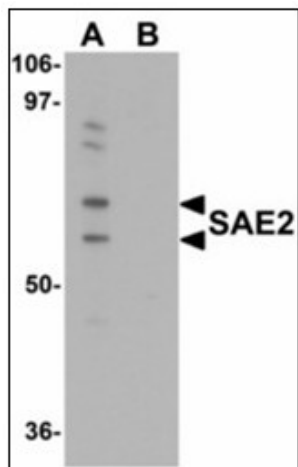
Product data:

Product Type:	Primary Antibodies
Applications:	ELISA, IHC, WB
Recommended Dilution:	ELISA. Immunohistochemistry on Paraffin Sections: 5 µg/ml. Western Blot: 0.25 - 0.5 µg/ml.
Reactivity:	Human
Host:	Rabbit
Clonality:	Polyclonal
Immunogen:	UBA2 antibody was raised against synthetic peptide - KLH conjugated
Specificity:	This antibody reacts to the C-term of SUMO-1 Activating Enzyme Subunit 2 (UBA2/SAE2).
Formulation:	PBS containing 0.02% sodium azide as preservative State: Purified State: Liquid purified Ig fraction
Concentration:	lot specific
Purification:	Immunoaffinity Chromatography
Conjugation:	Unconjugated
Storage:	Store the antibody undiluted at 2-8°C.
Stability:	Shelf life: one year from despatch.
Gene Name:	ubiquitin like modifier activating enzyme 2
Database Link:	Entrez Gene 10054 Human Q9UBT2
Synonyms:	SUMO-activating enzyme subunit 2, UBLE1B, ARX, HRIHFB2115
Protein Pathways:	Ubiquitin mediated proteolysis

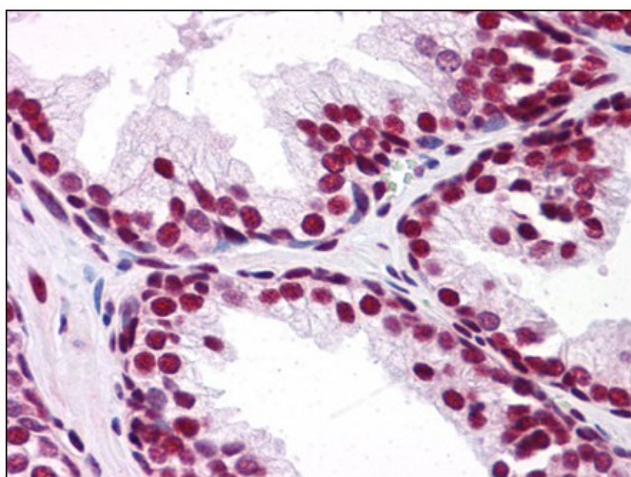


[View online »](#)

Product images:



Western blot analysis of SAE2 in 293 cell lysate with SAE2 antibody at 0.25 ug/ml in (A) the absence and (B) the presence of blocking peptide.



Human Prostate: Formalin-Fixed, Paraffin-Embedded (FFPE)