

## Product datasheet for **AP23955PU-N**

### KLHL25 Chicken Polyclonal Antibody

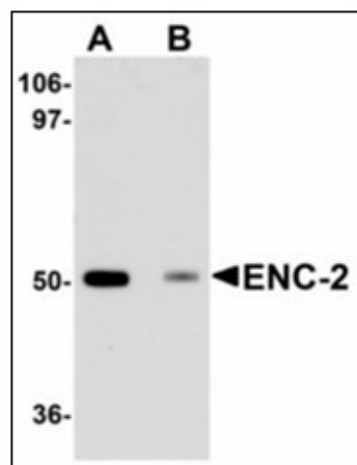
#### Product data:

Product Type:	Primary Antibodies
Applications:	ELISA, IHC, WB
Recommended Dilution:	<b>ELISA.</b> <b>Immunohistochemistry on Paraffin Sections:</b> 5 µg/ml. <b>Western Blot:</b> 1 - 2 µg/ml.
Reactivity:	Human
Host:	Chicken
Clonality:	Polyclonal
Immunogen:	14 amino acid peptide near the center of Human ENC-2.
Specificity:	This antibody reacts to the internal region of Kelch-like 25 (KLHL25).
Formulation:	PBS containing 0.02% sodium azide as preservative State: Purified State: Liquid purified Ig fraction
Concentration:	lot specific
Purification:	Immunoaffinity Chromatography
Conjugation:	Unconjugated
Storage:	Store the antibody undiluted at 2-8°C.
Stability:	Shelf life: one year from despatch.
Gene Name:	kelch like family member 25
Database Link:	<a href="#">Entrez Gene 64410 Human Q9H0H3</a>
Synonyms:	KLHL25, ENC2, Ectoderm-neural cortex protein 2, ENC-2

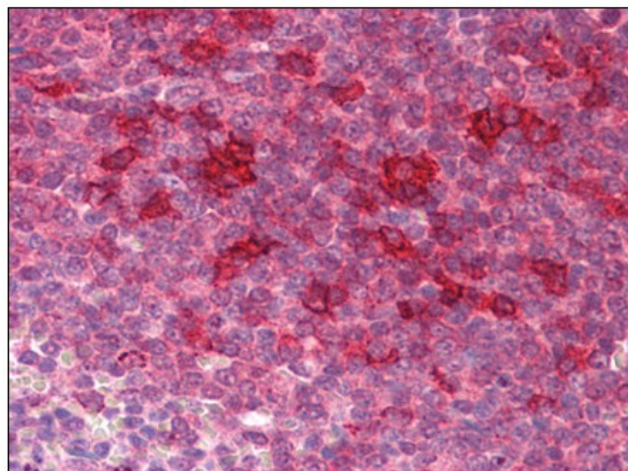


[View online »](#)

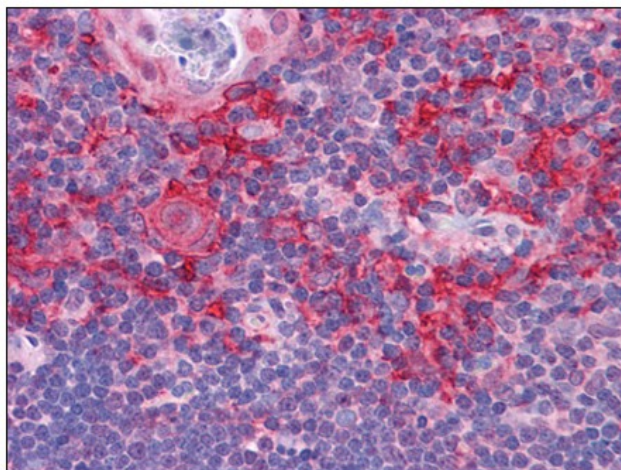
## Product images:



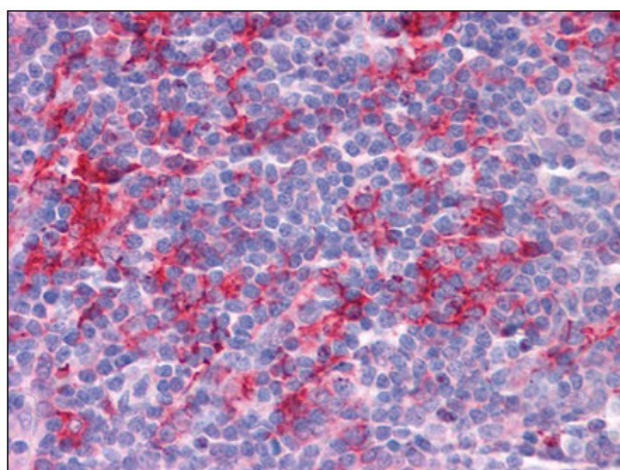
Western blot analysis of ENC-2 in Jurkat cell lysate with ENC-2 antibody at 1 ug/ml in (A) the absence and (B) the presence of blocking peptide.



Human Spleen: Formalin-Fixed, Paraffin-Embedded (FFPE)



Human Thymus: Formalin-Fixed, Paraffin-Embedded (FFPE)



Human Tonsil: Formalin-Fixed, Paraffin-Embedded (FFPE)