

## Product datasheet for **AP23954PU-N**

### **TMEM184B (C-term) Rabbit Polyclonal Antibody**

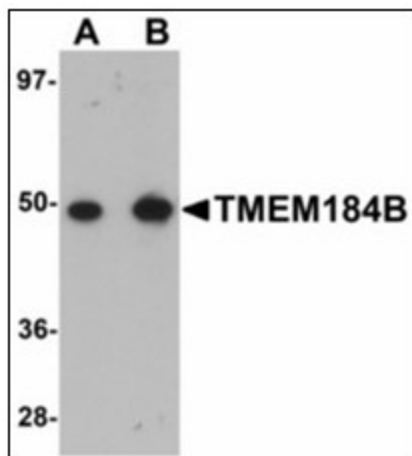
#### **Product data:**

Product Type:	Primary Antibodies
Applications:	ELISA, IHC, WB
Recommended Dilution:	<b>ELISA.</b> <b>Immunohistochemistry on Paraffin Sections:</b> 5 µg/ml. <b>Western Blot:</b> 1 - 2 µg/ml.
Reactivity:	Human, Mouse, Rat
Host:	Rabbit
Clonality:	Polyclonal
Immunogen:	C22orf5 antibody was raised against synthetic peptide - KLH conjugated
Specificity:	This antibody reacts to the C-term of Transmembrane Protein 184B (TMEM184B/C22orf5).
Formulation:	PBS containing 0.02% sodium azide as preservative State: Purified State: Liquid purified Ig fraction
Concentration:	lot specific
Purification:	Immunoaffinity Chromatography
Conjugation:	Unconjugated
Storage:	Store the antibody undiluted at 2-8°C.
Stability:	Shelf life: one year from despatch.
Gene Name:	transmembrane protein 184B
Database Link:	<a href="#">Entrez Gene 223693 Mouse</a> <a href="#">Entrez Gene 362959 Rat</a> <a href="#">Entrez Gene 25829 Human Q9Y519</a>
Synonyms:	Transmembrane protein 184B, C22orf5
Protein Families:	Transmembrane

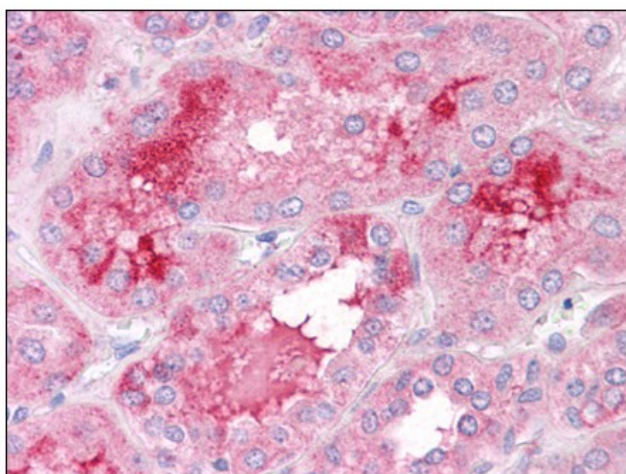


[View online »](#)

## Product images:



Western blot analysis of TMEM184B in rat lung tissue lysate with TMEM184B antibody at (A) 1 and (B) 2 ug/ml.



Human Kidney: Formalin-Fixed, Paraffin-Embedded (FFPE)