

## Product datasheet for **AP23952PU-N**

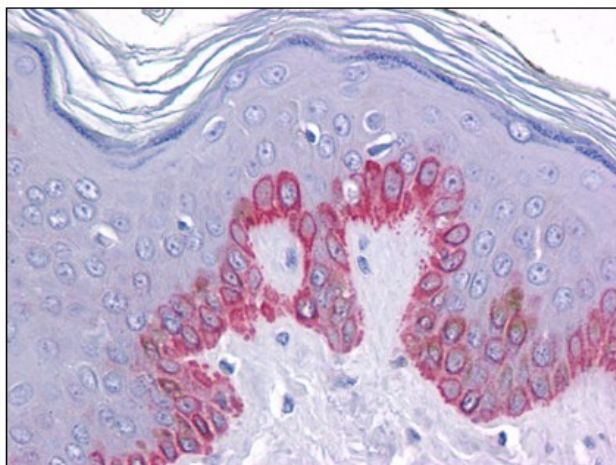
### **ZC3H12C (N-term) Rabbit Polyclonal Antibody**

#### Product data:

Product Type:	Primary Antibodies
Applications:	ELISA, IHC, WB
Recommended Dilution:	<b>ELISA.</b> <b>Immunohistochemistry on Paraffin Sections:</b> 5 µg/ml. <b>Western Blot:</b> 1 - 2 µg/ml.
Reactivity:	Human, Mouse, Rat
Host:	Rabbit
Clonality:	Polyclonal
Immunogen:	ZC3H12C antibody was raised against synthetic peptide - KLH conjugated
Specificity:	This antibody reacts to the N-term of Zinc Finger CCCH-Type Containing 12C (ZC3H12C).
Formulation:	PBS containing 0.02% sodium azide as preservative State: Purified State: Liquid purified Ig fraction
Concentration:	lot specific
Purification:	Immunoaffinity Chromatography
Conjugation:	Unconjugated
Storage:	Store the antibody undiluted at 2-8°C.
Stability:	Shelf life: one year from despatch.
Gene Name:	zinc finger CCCH-type containing 12C
Database Link:	<a href="#">Entrez Gene 244871 Mouse</a> <a href="#">Entrez Gene 315658 Rat</a> <a href="#">Entrez Gene 85463 Human</a> <a href="#">Q9C0D7</a>
Synonyms:	KIAA1726, MCPIP3



[View online »](#)

**Product images:**

Human Skin: Formalin-Fixed, Paraffin-Embedded (FFPE)