

## Product datasheet for **AP23950PU-N**

### STEAP2 (455-467) Rabbit Polyclonal Antibody

#### Product data:

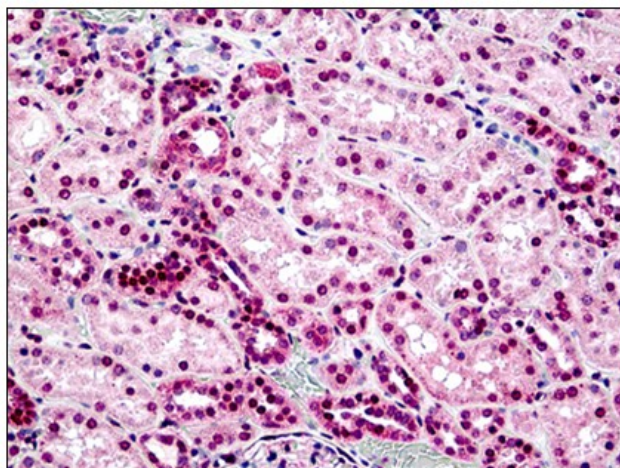
Product Type:	Primary Antibodies
Applications:	ELISA, IHC
Recommended Dilution:	<b>ELISA.</b> <b>Immunohistochemistry on Paraffin Sections:</b> 10 µg/ml.
Reactivity:	Human, Canine, Equine, Mouse
Host:	Rabbit
Isotype:	IgG
Clonality:	Polyclonal
Immunogen:	Synthetic peptide residues 455-467 of human STEAP2
Specificity:	This antibody reacts to Six Transmembrane Epithelial Antigen Of The Prostate 2 (STEAP2) at aa 455-467.
Formulation:	PBS containing 0.02% sodium azide as preservative State: Aff - Purified State: Liquid purified Ig fraction
Concentration:	lot specific
Purification:	Immunoaffinity Chromatography
Conjugation:	Unconjugated
Storage:	Store the antibody undiluted at 2-8°C for one month or (in aliquots) at -20°C for longer. Avoid repeated freezing and thawing.
Stability:	Shelf life: one year from despatch.
Gene Name:	STEAP2 metalloreductase
Database Link:	<a href="#">Entrez Gene 74051 Mouse</a> <a href="#">Entrez Gene 261729 Human</a> <a href="#">Q8NFT2</a>
Background:	Stamp1/Steap2 is highly expressed in prostate. It is localized to the Golgi complex, predominantly to the trans-Golgi network and to the plasma membrane. It is thought to play an important role in normal prostate and in prostate cancer progression as it showed increased expression in androgen-independent prostate cancer xenografts.
Synonyms:	STEAP-2, Metalloreductase STEAP2, STMP, PCANAP1, PUMPCn, IPCA1, IPCA-1



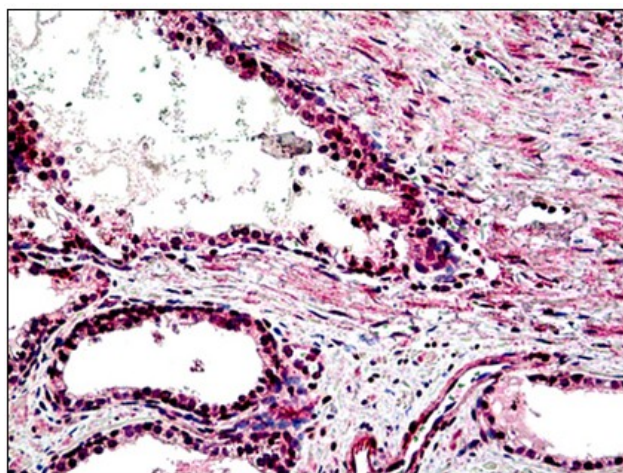
[View online »](#)

Protein Families: Transmembrane

**Product images:**



Human Kidney: Formalin-Fixed, Paraffin-Embedded (FFPE)



Human Prostate: Formalin-Fixed, Paraffin-Embedded (FFPE)