

Product datasheet for **AP23949PU-N**

BRIP1 (1233-1249) Rabbit Polyclonal Antibody

Product data:

Product Type:	Primary Antibodies
Applications:	ELISA, IHC, WB
Recommended Dilution:	ELISA. Immunohistochemistry on Paraffin Sections: 10 µg/ml. Western Blot: 1/500 - 1/1000.
Reactivity:	Human
Host:	Rabbit
Isotype:	IgG
Clonality:	Polyclonal
Immunogen:	Synthetic peptide from human BRIP1 / FANCI, aa 1233-1249
Specificity:	This antibody reacts to BRCA1 Interacting Protein C-terminal Helicase 1 (BRIP1) at aa 1233-1249.
Formulation:	PBS containing 0.02% sodium azide as preservative State: Aff - Purified State: Liquid purified Ig fraction
Concentration:	lot specific
Purification:	Immunoaffinity Chromatography
Conjugation:	Unconjugated
Storage:	Store the antibody undiluted at 2-8°C for one month or (in aliquots) at -20°C for longer. Avoid repeated freezing and thawing.
Stability:	Shelf life: one year from despatch.
Gene Name:	BRCA1 interacting protein C-terminal helicase 1
Database Link:	Entrez Gene 83990 Human Q9BX63
Background:	DNA-dependent ATPase and 5' to 3' DNA helicase required for the maintenance of chromosomal stability. Acts late in the Fanconi anemia pathway, after FANCD2 ubiquitination. Involved in the repair of DNA double-strand breaks by homologous recombination in a manner that depends on its association with BRCA1.

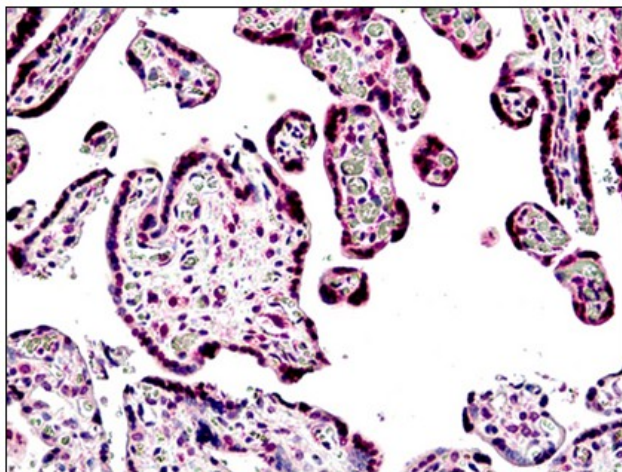


[View online »](#)

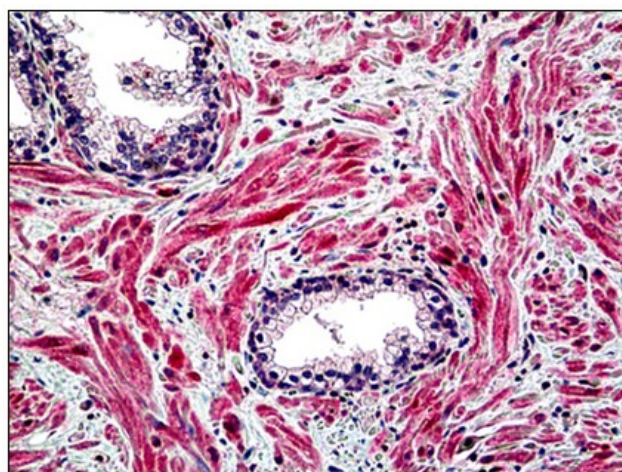
Synonyms: BACH1, Protein FACJ, Fanconi anemia group J protein

Protein Families: Druggable Genome

Product images:



Human Placenta: Formalin-Fixed, Paraffin-Embedded (FFPE)



Human Prostate: Formalin-Fixed, Paraffin-Embedded (FFPE)