

## Product datasheet for **AP23948PU-N**

### Artemin (ARTN) (127-140) Rabbit Polyclonal Antibody

#### Product data:

Product Type:	Primary Antibodies
Applications:	IHC, WB
Recommended Dilution:	<b>Immunohistochemistry on Paraffin Sections:</b> 10 µg/ml. <b>Western Blot:</b> 1/500 - 1/1000.
Reactivity:	Human
Host:	Rabbit
Isotype:	IgG
Clonality:	Polyclonal
Immunogen:	Synthetic peptide from human ARTN / Artemin, aa 127-140
Specificity:	This antibody reacts to the internal region of Artemin (ARTN) at aa 127-140.
Formulation:	PBS containing 0.02% sodium azide as preservative State: Aff - Purified State: Liquid purified Ig fraction
Concentration:	lot specific
Purification:	Immunoaffinity Chromatography
Conjugation:	Unconjugated
Storage:	Store the antibody undiluted at 2-8°C for one month or (in aliquots) at -20°C for longer. Avoid repeated freezing and thawing.
Stability:	Shelf life: one year from despatch.
Gene Name:	artemin
Database Link:	<a href="#">Entrez Gene 9048 Human Q5T4W7</a>
Background:	ARTN / Artemin is a member of the glial cell line-derived neurotrophic factor (GDNF) family of ligands which are a group of ligands within the TGF-beta superfamily of signaling molecules. GDNFs are unique in having neurotrophic properties and have potential use for gene therapy in neurodegenerative disease. Artemin has been shown in culture to support the survival of a number of peripheral neuron populations and at least one population of dopaminergic CNS neurons.

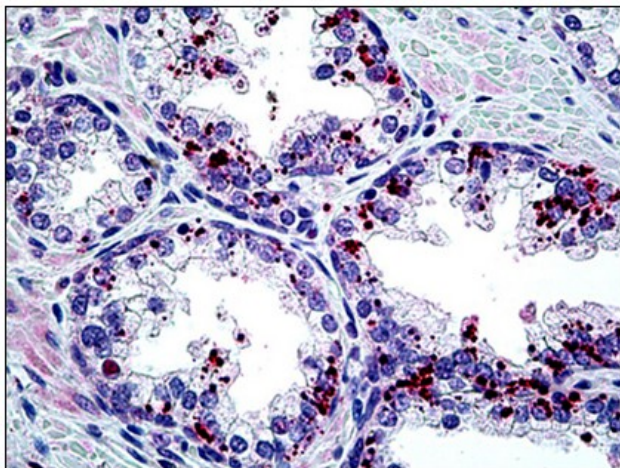


[View online »](#)

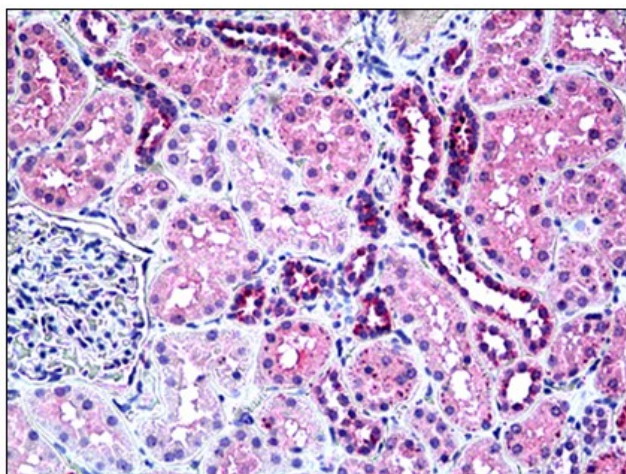
**Synonyms:** Enovin, Neublastin, ARTN, EVN

**Protein Families:** Druggable Genome, Secreted Protein

**Product images:**



Human Prostate: Formalin-Fixed, Paraffin-Embedded (FFPE)



Human Kidney: Formalin-Fixed, Paraffin-Embedded (FFPE)