

Product datasheet for **AP23945PU-N**

SLC37A2 Rabbit Polyclonal Antibody

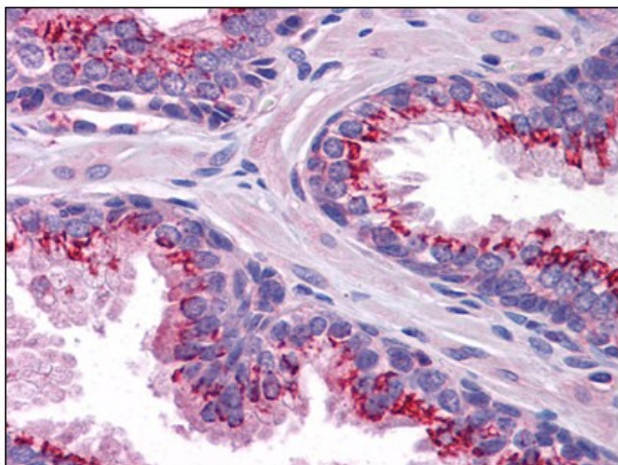
Product data:

Product Type:	Primary Antibodies
Applications:	ELISA, IHC, WB
Recommended Dilution:	ELISA. Immunohistochemistry on Paraffin Sections: 5 µg/ml. Western Blot: 1 - 2 µg/ml.
Reactivity:	Human, Mouse, Rat
Host:	Rabbit
Clonality:	Polyclonal
Immunogen:	SLC37A2 antibody was raised against synthetic peptide - KLH conjugated
Specificity:	This antibody reacts to the internal region of Solute Carrier Family 37 (glycerol-3-phosphate Transporter), Member 2 (SLC37A2).
Formulation:	PBS containing 0.02% sodium azide as preservative State: Purified State: Liquid purified Ig fraction
Concentration:	lot specific
Purification:	Immunoaffinity Chromatography
Conjugation:	Unconjugated
Storage:	Store the antibody undiluted at 2-8°C.
Stability:	Shelf life: one year from despatch.
Gene Name:	solute carrier family 37 member 2
Database Link:	Entrez Gene 56857 Mouse Entrez Gene 500973 Rat Entrez Gene 219855 Human Q8TED4
Synonyms:	Sugar phosphate exchanger 2
Protein Families:	Transmembrane



[View online »](#)

Product images:



Human Prostate: Formalin-Fixed, Paraffin-Embedded (FFPE)