

Product datasheet for **AP23942PU-N**

MTUS2 (C-term) Rabbit Polyclonal Antibody

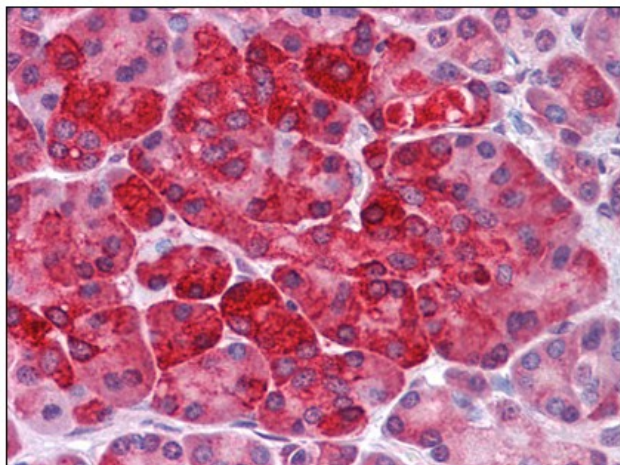
Product data:

Product Type:	Primary Antibodies
Applications:	ELISA, IHC, WB
Recommended Dilution:	ELISA. Immunohistochemistry on Paraffin Sections: 5 µg/ml. Western Blot: 1 - 2 µg/ml.
Reactivity:	Human, Mouse
Host:	Rabbit
Clonality:	Polyclonal
Immunogen:	KIAA0774 antibody was raised against synthetic peptide - KLH conjugated
Specificity:	This antibody reacts to the C-term of Microtubule-associated tumor suppressor candidate 2 (MTSU2/KIAA0774).
Formulation:	PBS containing 0.02% sodium azide as preservative State: Purified State: Liquid purified Ig fraction
Concentration:	lot specific
Purification:	Immunoaffinity Chromatography
Conjugation:	Unconjugated
Storage:	Store the antibody undiluted at 2-8°C.
Stability:	Shelf life: one year from despatch.
Gene Name:	microtubule associated tumor suppressor candidate 2
Database Link:	Entrez Gene 77521 Mouse Entrez Gene 23281 Human Q5JR59
Synonyms:	KIAA0774, TIP150, Microtubule plus-end tracking protein TIP150, Tracking protein of 150 kDa



[View online »](#)

Product images:



Human Pancreas: Formalin-Fixed, Paraffin-Embedded (FFPE)