

## Product datasheet for **AP23941PU-N**

### LZTR2 (SEC16B) (C-term) Rabbit Polyclonal Antibody

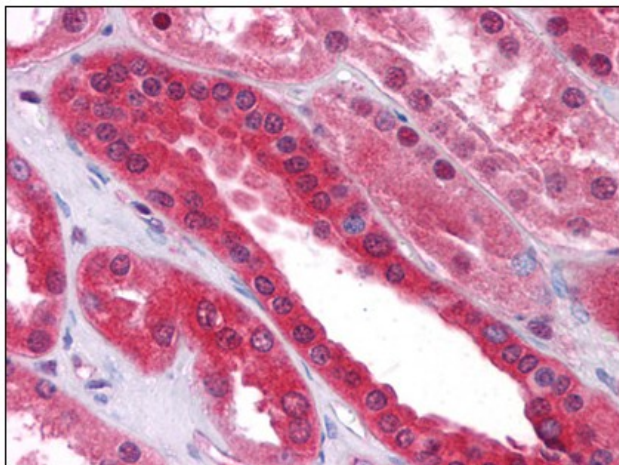
#### Product data:

Product Type:	Primary Antibodies
Applications:	ELISA, IHC, WB
Recommended Dilution:	<b>ELISA.</b> <b>Immunohistochemistry on Paraffin Sections:</b> 5 µg/ml. <b>Western Blot:</b> 1 - 2 µg/ml.
Reactivity:	Human, Mouse, Rat
Host:	Rabbit
Clonality:	Polyclonal
Immunogen:	SEC16B antibody was raised against synthetic peptide - KLH conjugated
Specificity:	This antibody reacts to the C-term of SEC16 Homolog B ( <i>S. Cerevisiae</i> ) (SEC16B).
Formulation:	PBS containing 0.02% sodium azide as preservative State: Purified State: Liquid purified Ig fraction
Concentration:	lot specific
Purification:	Immunoaffinity Chromatography
Conjugation:	Unconjugated
Storage:	Store the antibody undiluted at 2-8°C.
Stability:	Shelf life: one year from despatch.
Gene Name:	SEC16 homolog B, endoplasmic reticulum export factor
Database Link:	<a href="#">Entrez Gene 89867 Mouse</a> <a href="#">Entrez Gene 89868 Rat</a> <a href="#">Entrez Gene 89866 Human</a> <a href="#">Q96JE7</a>
Synonyms:	SEC16B, KIAA1928, LZTR2, RGPR, SEC16S, Protein transport protein Sec16B, Protein SEC16 homolog B, RGPR-p117, Leucine zipper transcription regulator 2



[View online »](#)

**Product images:**



Human Kidney: Formalin-Fixed, Paraffin-Embedded (FFPE)