

## Product datasheet for **AP23940PU-N**

### **MINA53 (MINA) (N-term) Rabbit Polyclonal Antibody**

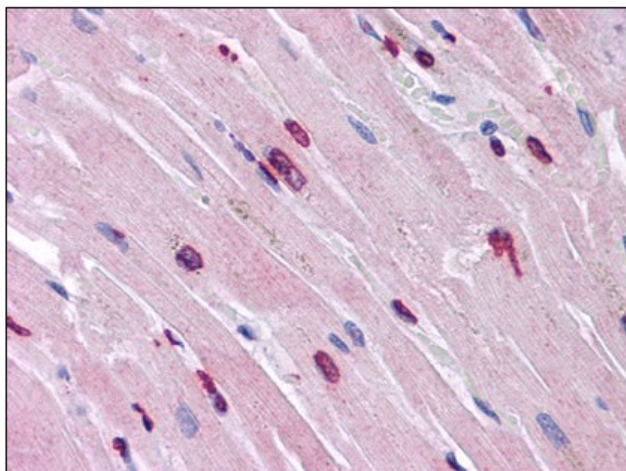
#### **Product data:**

|                       |  |
|-----------------------|--|
| Product Type:         | Primary Antibodies   |
| Applications:         | ELISA, IHC, WB   |
| Recommended Dilution: | <b>ELISA.</b><br><b>Immunohistochemistry on Paraffin Sections:</b> 5 µg/ml.<br><b>Western Blot:</b> 1 - 2 µg/ml. |
| Reactivity:           | Human, Mouse   |
| Host:                 | Rabbit   |
| Clonality:            | Polyclonal   |
| Immunogen:            | MINA antibody was raised against synthetic peptide - KLH conjugated  |
| Specificity:          | This antibody reacts to the N-term of MYC Induced Nuclear Antigen (MINA).  |
| Formulation:          | PBS containing 0.02% sodium azide as preservative<br>State: Purified<br>State: Liquid purified Ig fraction       |
| Concentration:        | lot specific   |
| Purification:         | Immunoaffinity Chromatography  |
| Conjugation:          | Unconjugated   |
| Storage:              | Store the antibody undiluted at 2-8°C.<br><b>DO NOT FREEZE!</b>  |
| Stability:            | Shelf life: one year from despatch.  |
| Gene Name:            | MYC induced nuclear antigen  |
| Database Link:        | <a href="#">Entrez Gene 67014 Mouse</a> <a href="#">Entrez Gene 84864 Human</a><br><a href="#">Q8IUJ8</a>        |
| Synonyms:             | Mineral dust-induced gene protein, Nucleolar protein 52, MINA, MDIG, MINA53, NO52                                |
| Protein Families:     | Druggable Genome   |



[View online »](#)

**Product images:**



Human Heart: Formalin-Fixed, Paraffin-Embedded (FFPE)