

Product datasheet for **AP23936PU-N**

Synaptogyrin 3 (SYNGR3) (C-term) Rabbit Polyclonal Antibody

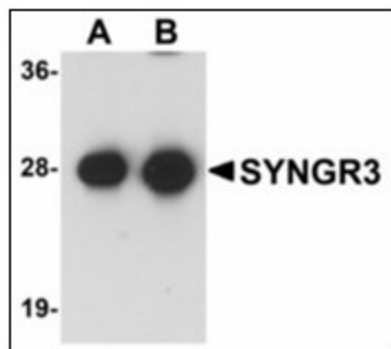
Product data:

Product Type:	Primary Antibodies
Applications:	ELISA, IHC, WB
Recommended Dilution:	ELISA. Immunohistochemistry on Paraffin Sections: 5 µg/ml. Western Blot: 1 - 2 µg/ml.
Reactivity:	Human, Mouse, Rat
Host:	Rabbit
Clonality:	Polyclonal
Immunogen:	SYNGR3 antibody was raised against synthetic peptide - KLH conjugated
Specificity:	This antibody reacts to the C-term of Synaptogyrin 3 (SYNGR3).
Formulation:	PBS containing 0.02% sodium azide as preservative State: Purified State: Liquid purified Ig fraction
Concentration:	lot specific
Purification:	Immunoaffinity Chromatography
Conjugation:	Unconjugated
Storage:	Store the antibody undiluted at 2-8°C.
Stability:	Shelf life: one year from despatch.
Gene Name:	synaptogyrin 3
Database Link:	Entrez Gene 20974 Mouse Entrez Gene 302975 Rat Entrez Gene 9143 Human O43761
Synonyms:	MGC:20003
Protein Families:	Transmembrane

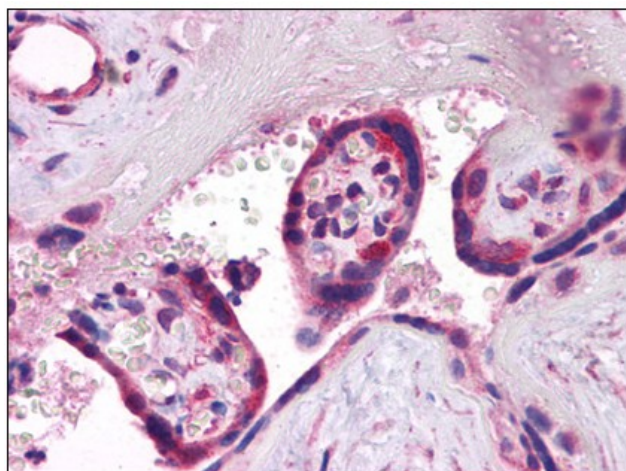


[View online »](#)

Product images:



Western blot analysis of SYNGR3 in mouse brain tissue lysate with SYNGR3 antibody at (A) 1 and (B) 2 ug/ml.



Human Placenta: Formalin-Fixed, Paraffin-Embedded (FFPE)