

## Product datasheet for **AP23935PU-N**

### Synaptogyrin 2 (SYNGR2) (N-term) Rabbit Polyclonal Antibody

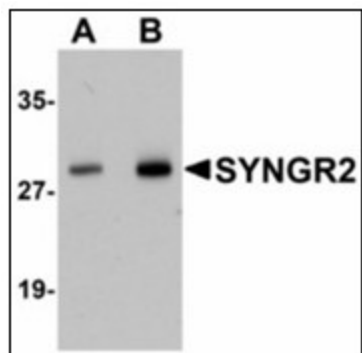
#### Product data:

Product Type:	Primary Antibodies
Applications:	ELISA, IHC, WB
Recommended Dilution:	<b>ELISA.</b> <b>Immunohistochemistry on Paraffin Sections:</b> 5 µg/ml. <b>Western Blot:</b> 1 - 2 µg/ml.
Reactivity:	Human, Rat
Host:	Rabbit
Clonality:	Polyclonal
Immunogen:	SYNGR2 antibody was raised against synthetic peptide - KLH conjugated
Specificity:	This antibody reacts to the N-term of Synaptogyrin 2 (SYNGR2).
Formulation:	PBS containing 0.02% sodium azide as preservative State: Purified State: Liquid purified Ig fraction
Concentration:	lot specific
Purification:	Immunoaffinity Chromatography
Conjugation:	Unconjugated
Storage:	Store the antibody undiluted at 2-8°C.
Stability:	Shelf life: one year from despatch.
Gene Name:	synaptogyrin 2
Database Link:	<a href="#">Entrez Gene 89815 Rat</a> <a href="#">Entrez Gene 9144 Human</a> <a href="#">O43760</a>
Synonyms:	Cellugyrin
Protein Families:	Transmembrane

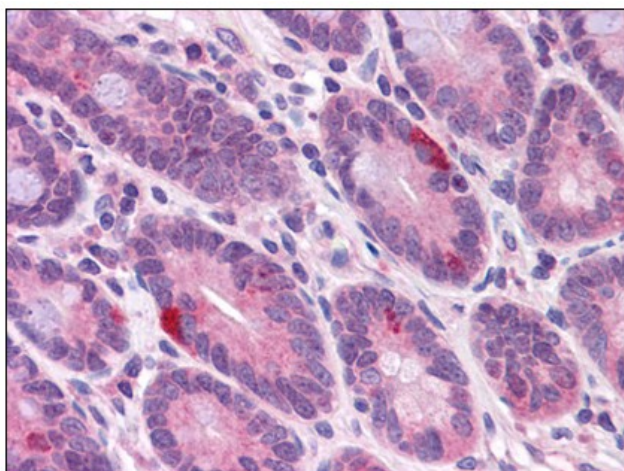


[View online »](#)

## Product images:



Western blot analysis of SYNGR2 in human lung tissue lysate with SYNGR2 antibody at (A) 1 and (B) 2 ug/ml.



Human Small Intestine: Formalin-Fixed, Paraffin-Embedded (FFPE)