

## Product datasheet for **AP23934PU-N**

### Synaptogyrin 1 (SYNGR1) Rabbit Polyclonal Antibody

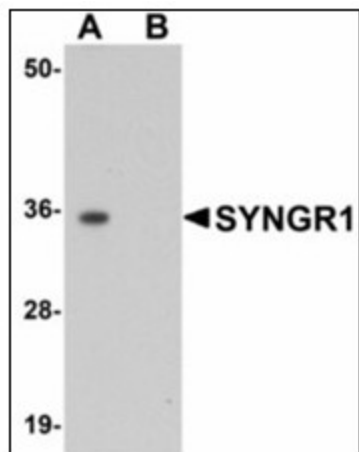
#### Product data:

Product Type:	Primary Antibodies
Applications:	ELISA, IHC, WB
Recommended Dilution:	<b>ELISA.</b> <b>Immunohistochemistry on Paraffin Sections:</b> 5 µg/ml. <b>Western Blot:</b> 1 - 2 µg/ml.
Reactivity:	Human, Mouse, Rat
Host:	Rabbit
Clonality:	Polyclonal
Immunogen:	SYNGR1 antibody was raised against synthetic peptide - KLH conjugated
Specificity:	This antibody reacts to the internal region of Synaptogyrin 1a (SYNGR1).
Formulation:	PBS containing 0.02% sodium azide as preservative State: Purified State: Liquid purified Ig fraction
Concentration:	lot specific
Purification:	Immunoaffinity Chromatography
Conjugation:	Unconjugated
Storage:	Store the antibody undiluted at 2-8°C.
Stability:	Shelf life: one year from despatch.
Gene Name:	synaptogyrin 1
Database Link:	<a href="#">Entrez Gene 20972 Mouse</a> <a href="#">Entrez Gene 29205 Rat</a> <a href="#">Entrez Gene 9145 Human O43759</a>
Synonyms:	MGC:1939
Protein Families:	Transmembrane

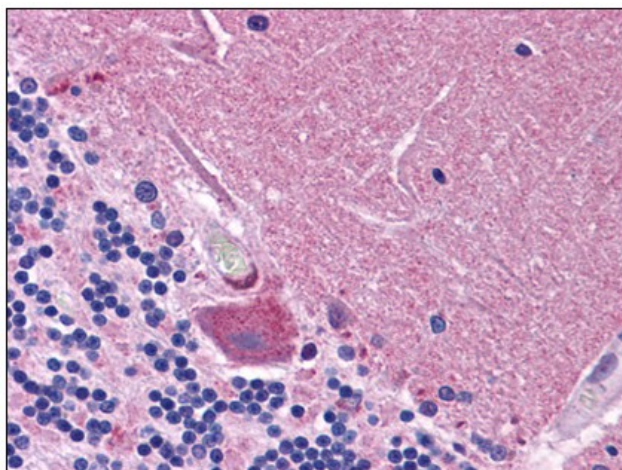


[View online »](#)

## Product images:



Western blot analysis of SYNGR1 in rat brain tissue lysate with SYNGR1 antibody at 1 ug/ml in (A) the absence and (B) the presence of blocking peptide.



Human Brain, Cerebellum: Formalin-Fixed, Paraffin-Embedded (FFPE)