

Product datasheet for **AP23930PU-N**

PICALM (N-term) Rabbit Polyclonal Antibody

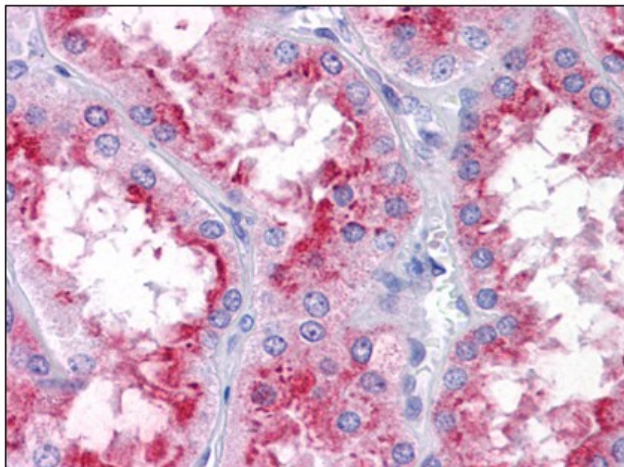
Product data:

Product Type:	Primary Antibodies
Applications:	ELISA, IHC, WB
Recommended Dilution:	ELISA. Immunohistochemistry on Paraffin Sections: 5 µg/ml. Western Blot: 1 - 2 µg/ml.
Reactivity:	Human, Mouse, Rat
Host:	Rabbit
Clonality:	Polyclonal
Immunogen:	PICALM antibody was raised against synthetic peptide - KLH conjugated
Specificity:	This antibody reacts to the N-term of Phosphatidylinositol Binding Clathrin Assembly Protein (PICALM).
Formulation:	PBS containing 0.02% sodium azide as preservative State: Purified State: Liquid purified Ig fraction
Concentration:	lot specific
Purification:	Immunoaffinity Chromatography
Conjugation:	Unconjugated
Storage:	Store the antibody undiluted at 2-8°C.
Stability:	Shelf life: one year from despatch.
Gene Name:	phosphatidylinositol binding clathrin assembly protein
Database Link:	Entrez Gene 89816 Rat Entrez Gene 233489 Mouse Entrez Gene 8301 Human Q13492
Synonyms:	CALM
Protein Families:	Druggable Genome



[View online »](#)

Product images:



Human Kidney: Formalin-Fixed, Paraffin-Embedded (FFPE)