

Product datasheet for **AP23926PU-N**

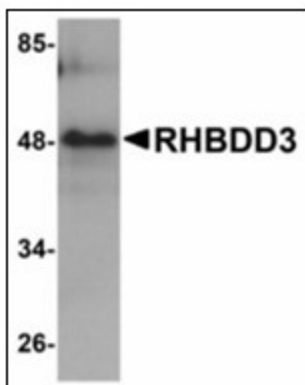
RHBDD3 Rabbit Polyclonal Antibody

Product data:

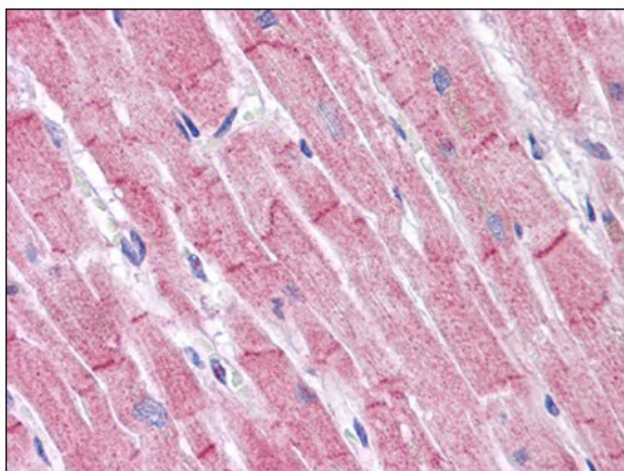
Product Type:	Primary Antibodies
Applications:	ELISA, IHC, WB
Recommended Dilution:	ELISA. Immunohistochemistry on Paraffin Sections: 5 µg/ml. Western Blot: 1 - 2 µg/ml.
Reactivity:	Human, Mouse, Rat
Host:	Rabbit
Clonality:	Polyclonal
Immunogen:	Synthetic peptide - KLH conjugated, Synthetic peptide
Specificity:	This antibody reacts to the internal region of Chromosome 22 Open Reading Frame 3 (C22orf3) (RHBDD3).
Formulation:	PBS containing 0.02% sodium azide as preservative State: Purified State: Liquid purified Ig fraction
Concentration:	lot specific
Purification:	Immunoaffinity Chromatography
Conjugation:	Unconjugated
Storage:	Store the antibody undiluted at 2-8°C.
Stability:	Shelf life: one year from despatch.
Gene Name:	rhomboid domain containing 3
Database Link:	Entrez Gene 279766 Mouse Entrez Gene 289753 Rat Entrez Gene 25807 Human Q9Y3P4
Synonyms:	C22orf3
Protein Families:	Druggable Genome, Transmembrane



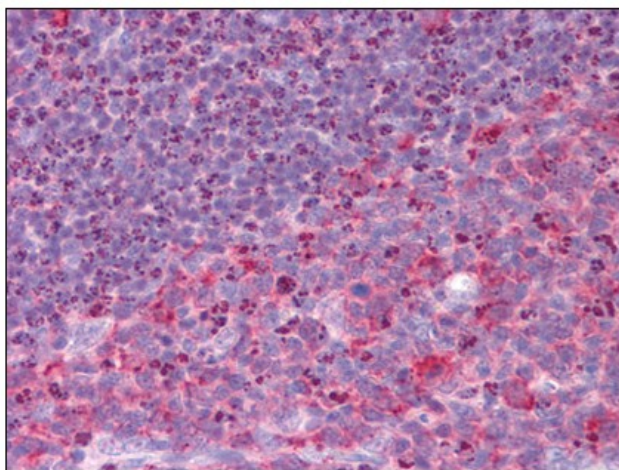
[View online »](#)

Product images:


Western blot analysis of RHBDD3 in rat lung tissue lysate with RHBDD3 antibody at 1 ug/ml.



Human Heart: Formalin-Fixed, Paraffin-Embedded (FFPE)



Human Tonsil: Formalin-Fixed, Paraffin-Embedded (FFPE)