

## Product datasheet for **AP23920PU-N**

### **SIPA1L3 (N-term) Rabbit Polyclonal Antibody**

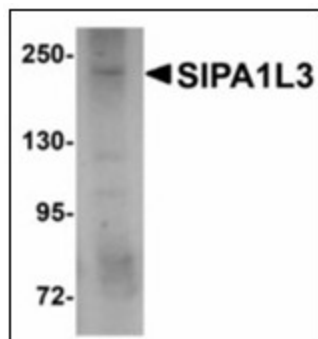
#### **Product data:**

Product Type:	Primary Antibodies
Applications:	ELISA, IHC, WB
Recommended Dilution:	<b>ELISA.</b> <b>Immunohistochemistry on Paraffin Sections:</b> 5 µg/ml. <b>Western Blot:</b> 1 - 2 µg/ml.
Reactivity:	Human, Mouse, Rat
Host:	Rabbit
Clonality:	Polyclonal
Immunogen:	Synthetic peptide - KLH conjugated, Synthetic peptide
Specificity:	This antibody reacts to the N-term of Signal-induced Proliferation-associated 1 Like 3 (SIPA1L3).
Formulation:	PBS containing 0.02% sodium azide as preservative State: Purified State: Liquid purified Ig fraction
Concentration:	lot specific
Purification:	Immunoaffinity Chromatography
Conjugation:	Unconjugated
Storage:	Store the antibody undiluted at 2-8°C.
Stability:	Shelf life: one year from despatch.
Gene Name:	signal induced proliferation associated 1 like 3
Database Link:	<a href="#">Entrez Gene 74206 Mouse</a> <a href="#">Entrez Gene 292771 Rat</a> <a href="#">Entrez Gene 23094 Human O60292</a>
Synonyms:	SPA-1-like protein 3, KIAA0545, SPAL3

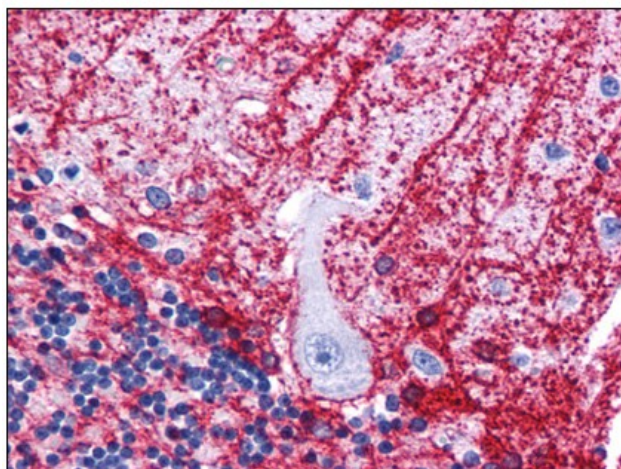


[View online »](#)

## Product images:



Western blot analysis of SIPA1L3 in SK-N-SH lysate with SIPA1L3 antibody at 1 ug/ml.



Human Brain, Cerebellum: Formalin-Fixed, Paraffin-Embedded (FFPE)