

Product datasheet for **AP23918PU-N**

SIPA1L1 (N-term) Rabbit Polyclonal Antibody

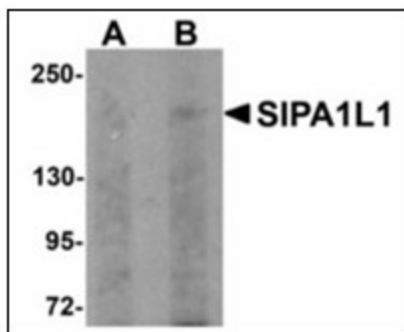
Product data:

Product Type:	Primary Antibodies
Applications:	ELISA, IHC, WB
Recommended Dilution:	ELISA. Immunohistochemistry on Paraffin Sections: 10 µg/ml. Western Blot: 0.5 - 1 µg/ml.
Reactivity:	Human, Mouse, Rat
Host:	Rabbit
Clonality:	Polyclonal
Immunogen:	SIPA1L1 antibody was raised against synthetic peptide - KLH conjugated
Specificity:	This antibody reacts to the N-term of Signal-induced Proliferation-associated 1 Like 1 (SIPA1L1).
Formulation:	PBS containing 0.02% sodium azide as preservative State: Purified State: Liquid purified Ig fraction
Concentration:	lot specific
Purification:	Immunoaffinity Chromatography
Conjugation:	Unconjugated
Storage:	Store the antibody undiluted at 2-8°C.
Stability:	Shelf life: one year from despatch.
Gene Name:	signal induced proliferation associated 1 like 1
Database Link:	Entrez Gene 217692 Mouse Entrez Gene 246212 Rat Entrez Gene 26037 Human O43166
Synonyms:	SIPA1-like protein 1, E6TP1, KIAA0440

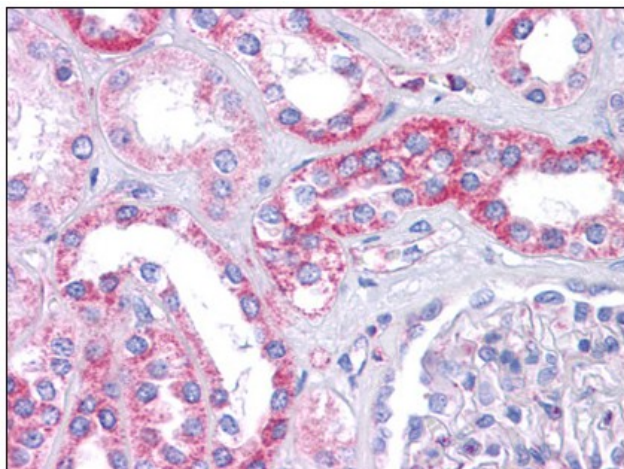


[View online »](#)

Product images:



Western blot analysis of SIPA1L1 in rat brain tissue lysate with SIPA1L1 antibody at (A) 0.5 and (B) 1 ug/ml.



Human Kidney: Formalin-Fixed, Paraffin-Embedded (FFPE)