

Product datasheet for **AP23915PU-N**

SRPX2 (N-term) Rabbit Polyclonal Antibody

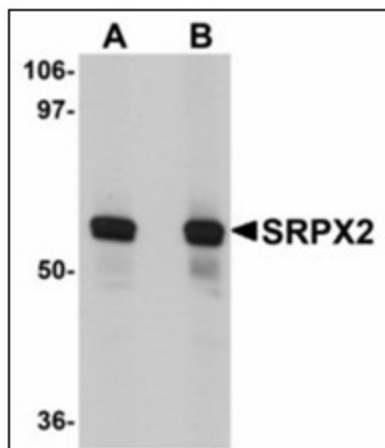
Product data:

Product Type:	Primary Antibodies
Applications:	ELISA, IHC, WB
Recommended Dilution:	ELISA. Immunohistochemistry on Paraffin Sections: 5 µg/ml. Western Blot: 1 - 2 µg/ml.
Reactivity:	Human, Mouse, Rat
Host:	Rabbit
Clonality:	Polyclonal
Immunogen:	SRPX2 antibody was raised against synthetic peptide - KLH conjugated
Specificity:	This antibody reacts to the N-term of Sushi-repeat Protein (SRPUL) (SRPX2).
Formulation:	PBS containing 0.02% sodium azide as preservative State: Purified State: Liquid purified Ig fraction
Concentration:	lot specific
Purification:	Immunoaffinity Chromatography
Conjugation:	Unconjugated
Storage:	Store the antibody undiluted at 2-8°C.
Stability:	Shelf life: one year from despatch.
Gene Name:	sushi repeat containing protein, X-linked 2
Database Link:	Entrez Gene 68792 Mouse Entrez Gene 317181 Rat Entrez Gene 27286 Human O60687
Background:	Sushi repeat-containing protein/sushi-repeat protein upregulated in leukemia may have a role in the pathogenesis of retinitis pigmentosa and has been shown to be up regulated in the pro-B leukemia cell line UDC-81.
Synonyms:	BPP; CBPS; PMGX; RESDX; SRPUL
Protein Families:	Druggable Genome, Secreted Protein

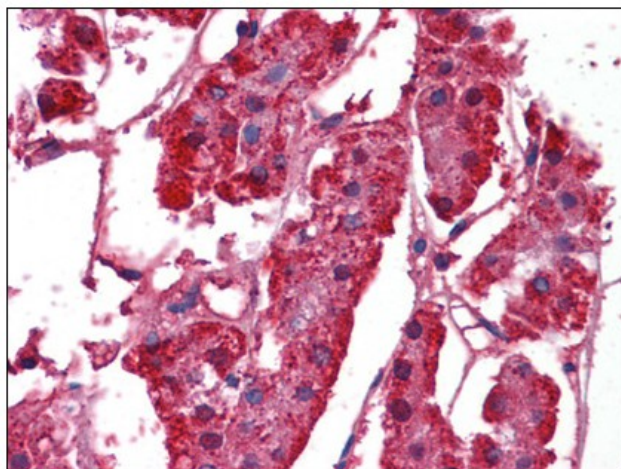


[View online »](#)

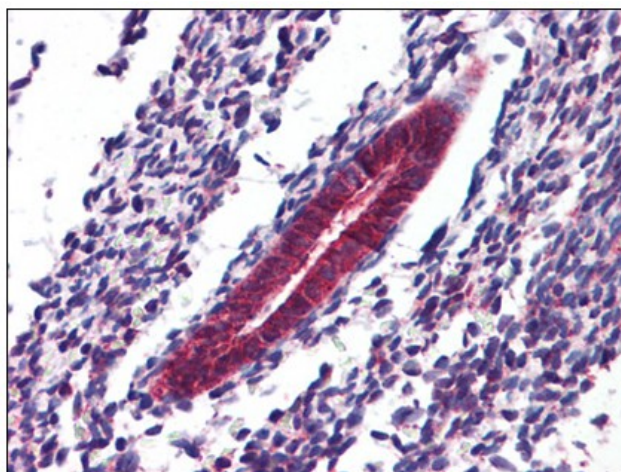
Product images:



Western blot analysis of SRPX2 in human lung tissue lysate with SRPX2 antibody at (A) 1 and (B) 2 ug/ml.



Human Adrenal: Formalin-Fixed, Paraffin-Embedded (FFPE)



Human Uterus: Formalin-Fixed, Paraffin-Embedded (FFPE)