

Product datasheet for **AP23910PU-N**

Mimitin (NDUFAF2) (C-term) Rabbit Polyclonal Antibody

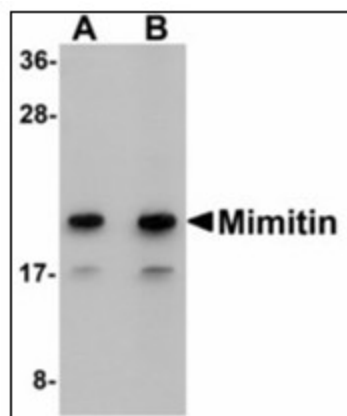
Product data:

Product Type:	Primary Antibodies
Applications:	ELISA, IF, IHC, WB
Recommended Dilution:	ELISA. Immunofluorescence. Immunohistochemistry on Paraffin Sections: 5 µg/ml. Western Blot: 1 - 2 µg/ml.
Reactivity:	Human
Host:	Rabbit
Clonality:	Polyclonal
Immunogen:	Synthetic peptide - KLH conjugated
Specificity:	This antibody reacts to the C-term of NDUFAF2.
Formulation:	PBS containing 0.02% sodium azide as preservative State: Purified State: Liquid purified Ig fraction
Concentration:	lot specific
Purification:	Immunoaffinity Chromatography
Conjugation:	Unconjugated
Storage:	Store the antibody undiluted at 2-8°C.
Stability:	Shelf life: one year from despatch.
Gene Name:	NADH:ubiquinone oxidoreductase complex assembly factor 2
Database Link:	Entrez Gene 91942 Human Q8N183
Synonyms:	Myc-induced mitochondrial protein, B17.2-like, NDUFAF2, NDUFA12L

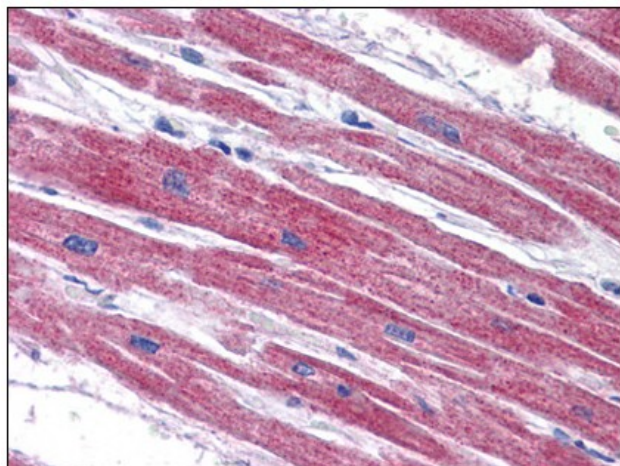


[View online »](#)

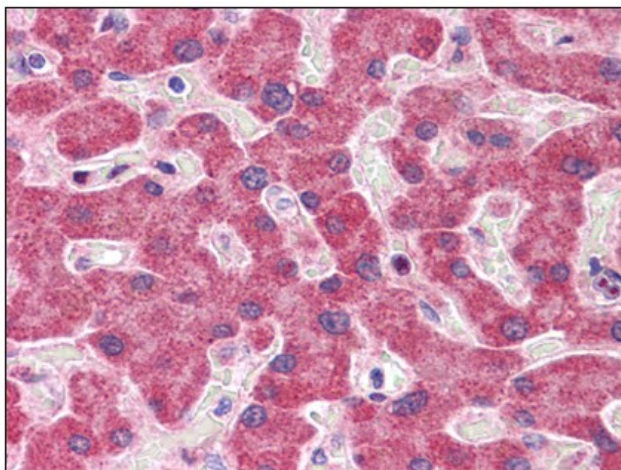
Product images:



Western blot analysis of Mimitin in Raji cell lysate with Mimitin antibody at (A) 1 and (B) 2 ug/ml.



Human Heart: Formalin-Fixed, Paraffin-Embedded (FFPE)



Human Liver: Formalin-Fixed, Paraffin-Embedded (FFPE)