

Product datasheet for **AP23909PU-N**

GOLPH3 (N-term) Rabbit Polyclonal Antibody

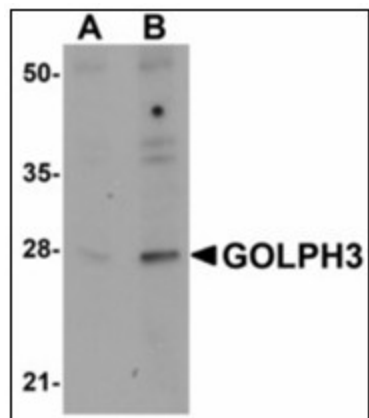
Product data:

Product Type:	Primary Antibodies
Applications:	ELISA, IHC, WB
Recommended Dilution:	ELISA. Immunohistochemistry on Paraffin Sections: 5 µg/ml. Western Blot: 0.5 - 1 µg/ml.
Reactivity:	Human, Mouse, Rat
Host:	Rabbit
Clonality:	Polyclonal
Immunogen:	Synthetic peptide - KLH conjugated
Specificity:	This antibody reacts to the N-term of GOLPH3.
Formulation:	PBS containing 0.02% sodium azide as preservative State: Purified State: Liquid purified Ig fraction
Concentration:	lot specific
Purification:	Immunoaffinity Chromatography
Conjugation:	Unconjugated
Storage:	Store the antibody undiluted at 2-8°C.
Stability:	Shelf life: one year from despatch.
Gene Name:	golgi phosphoprotein 3
Database Link:	Entrez Gene 66629 Mouse Entrez Gene 78961 Rat Entrez Gene 64083 Human Q9H4A6
Synonyms:	GPP34, Coat protein GPP34, MIDAS

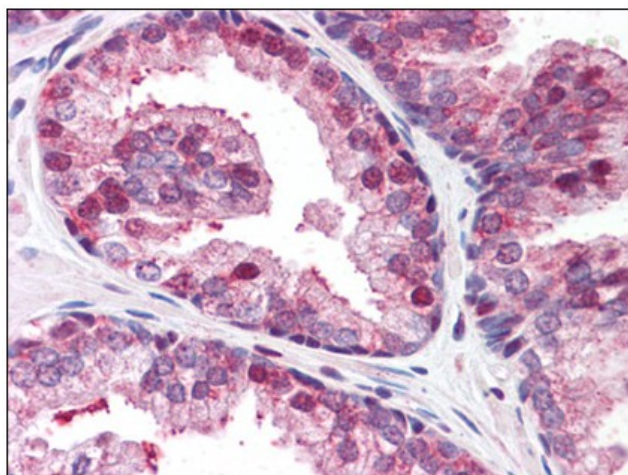


[View online »](#)

Product images:



Western blot analysis of GOLPH3 in rat lung tissue lysate with GOLPH3 antibody at (A) 0.5 and (B) 1 ug/ml.



Human Prostate: Formalin-Fixed, Paraffin-Embedded (FFPE)