

Product datasheet for **AP23908PU-N**

PA1 (PAGR1) (C-term) Rabbit Polyclonal Antibody

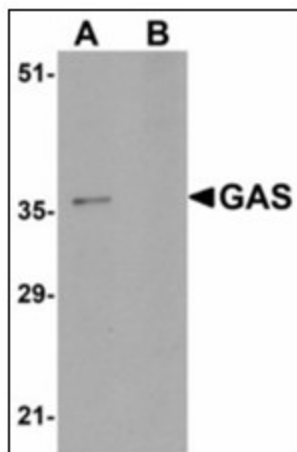
Product data:

Product Type:	Primary Antibodies
Applications:	ELISA, IHC, WB
Recommended Dilution:	ELISA. Immunohistochemistry on Paraffin Sections: 5 µg/ml. Western Blot: 1 - 2 µg/ml.
Reactivity:	Human, Mouse
Host:	Rabbit
Clonality:	Polyclonal
Immunogen:	Synthetic peptide - KLH conjugated
Specificity:	This antibody reacts to the C-term of C16orf53.
Formulation:	PBS containing 0.02% sodium azide as preservative State: Purified State: Liquid purified Ig fraction
Concentration:	lot specific
Purification:	Immunoaffinity Chromatography
Conjugation:	Unconjugated
Storage:	Store the antibody undiluted at 2-8°C.
Stability:	Shelf life: one year from despatch.
Gene Name:	PAXIP1 associated glutamate rich protein 1
Database Link:	Entrez Gene 79447 Human Q9BTK6
Synonyms:	C16orf53

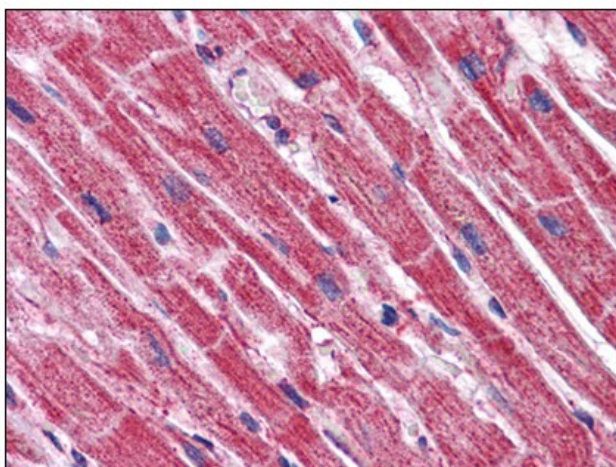


[View online »](#)

Product images:



Western blot analysis of GAS in EL4 cell lysate in (A) the absence and (B) the presence of blocking peptide with GAS antibody at 1 ug/ml.



Human Heart: Formalin-Fixed, Paraffin-Embedded (FFPE)