

Product datasheet for **AP23907PU-N**

PLEKHO1 (C-term) Rabbit Polyclonal Antibody

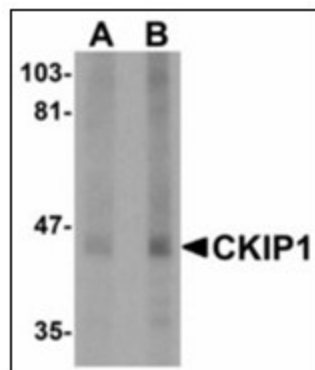
Product data:

Product Type:	Primary Antibodies
Applications:	ELISA, IHC, WB
Recommended Dilution:	ELISA. Immunohistochemistry on Paraffin Sections: 5 µg/ml. Western Blot: 1 - 2 µg/ml.
Reactivity:	Human, Mouse, Rat
Host:	Rabbit
Clonality:	Polyclonal
Immunogen:	Synthetic peptide - KLH conjugated
Specificity:	This antibody reacts to the C-term of PLEKHO1.
Formulation:	PBS containing 0.02% sodium azide as preservative State: Purified State: Liquid purified Ig fraction
Concentration:	lot specific
Purification:	Immunoaffinity Chromatography
Conjugation:	Unconjugated
Storage:	Store the antibody undiluted at 2-8°C.
Stability:	Shelf life: one year from despatch.
Gene Name:	pleckstrin homology domain containing O1
Database Link:	Entrez Gene 67220 Mouse Entrez Gene 310674 Rat Entrez Gene 51177 Human Q53GL0
Synonyms:	OC120, HQ0024c, CK2-interacting protein 1, JBP, CKIP-1

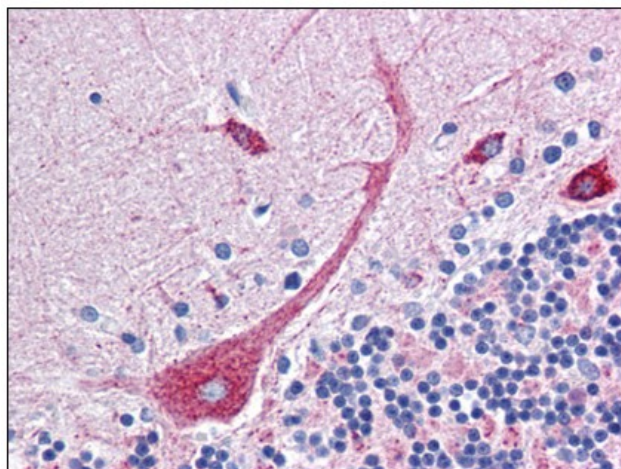


[View online »](#)

Product images:



Western blot analysis of CKIP1 in human lung tissue lysate with CKIP1 antibody at (A) 1 and (B) 2 ug/ml.



Human Brain, Cerebellum: Formalin-Fixed, Paraffin-Embedded (FFPE)