

Product datasheet for **AP23903PU-N**

SKA2 (N-term) Rabbit Polyclonal Antibody

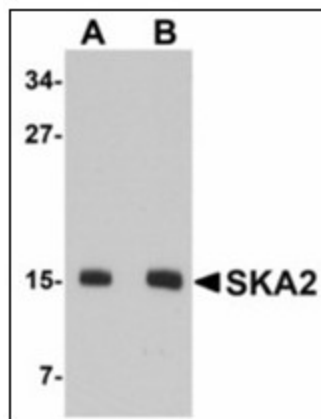
Product data:

Product Type:	Primary Antibodies
Applications:	ELISA, IHC, WB
Recommended Dilution:	ELISA. Immunohistochemistry on Paraffin Sections: 5 µg/ml. Western Blot: 0.5 - 1 µg/ml.
Reactivity:	Human, Mouse
Host:	Rabbit
Clonality:	Polyclonal
Immunogen:	Synthetic peptide - KLH conjugated
Specificity:	This antibody reacts to the N-term of SKA2.
Formulation:	PBS containing 0.02% sodium azide as preservative State: Purified State: Liquid purified Ig fraction
Concentration:	lot specific
Purification:	Immunoaffinity Chromatography
Conjugation:	Unconjugated
Storage:	Store the antibody undiluted at 2-8°C.
Stability:	Shelf life: one year from despatch.
Gene Name:	spindle and kinetochore associated complex subunit 2
Database Link:	Entrez Gene 66140 Mouse Entrez Gene 348235 Human Q8WVK7
Synonyms:	FAM33A

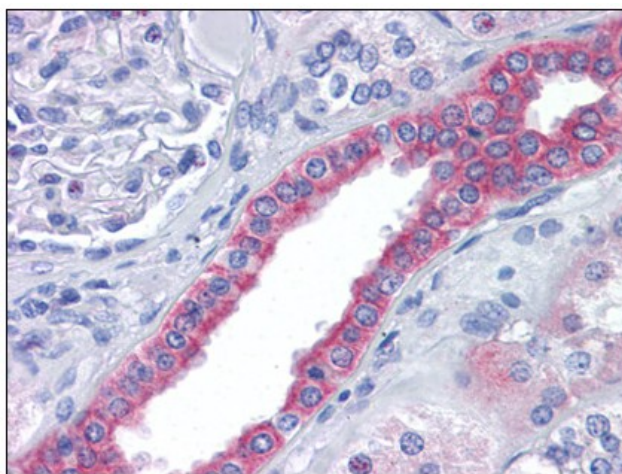


[View online »](#)

Product images:



Western blot analysis of SKA2 in 3T3 cell lysate with SKA2 antibody at (A) 0.5 and (B) 1 μ g/ml.



Human Kidney: Formalin-Fixed, Paraffin-Embedded (FFPE)