

Product datasheet for **AP23901PU-N**

JMJD5 (KDM8) (C-term) Rabbit Polyclonal Antibody

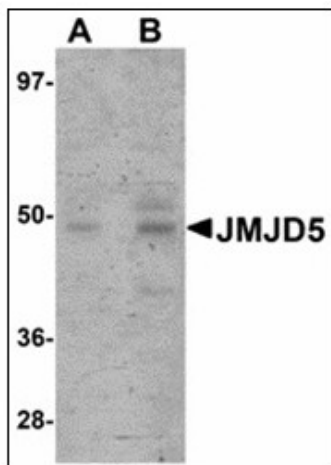
Product data:

| | |
|-----------------------|--|
| Product Type: | Primary Antibodies |
| Applications: | ELISA, IHC, WB |
| Recommended Dilution: | ELISA. Immunohistochemistry on Paraffin Sections: 5 µg/ml. Western Blot: 1 - 2 µg/ml. |
| Reactivity: | Human, Mouse, Rat |
| Host: | Rabbit |
| Clonality: | Polyclonal |
| Immunogen: | Synthetic peptide - KLH conjugated |
| Specificity: | This antibody reacts to the C-term of JMJD5. |
| Formulation: | PBS containing 0.02% sodium azide as preservative State: Purified State: Liquid purified Ig fraction |
| Concentration: | lot specific |
| Purification: | Immunoaffinity Chromatography |
| Conjugation: | Unconjugated |
| Storage: | Store the antibody undiluted at 2-8°C. |
| Stability: | Shelf life: one year from despatch. |
| Gene Name: | lysine demethylase 8 |
| Database Link: | Entrez Gene 77035 Mouse Entrez Gene 308976 Rat Entrez Gene 79831 Human Q8N371 |
| Synonyms: | JmjC domain-containing protein 5, FLJ13798, Jumonji domain-containing protein 5 |

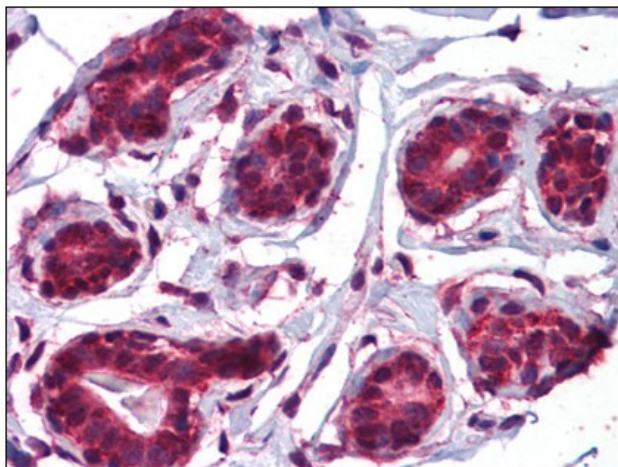


[View online »](#)

Product images:



Western blot analysis of JMJD5 in human liver tissue lysate with JMJD5 antibody at (A) 1 and (B) 2 ug/ml.



Human Breast: Formalin-Fixed, Paraffin-Embedded (FFPE)