

Product datasheet for **AP23899PU-N**

KDM4A Rabbit Polyclonal Antibody

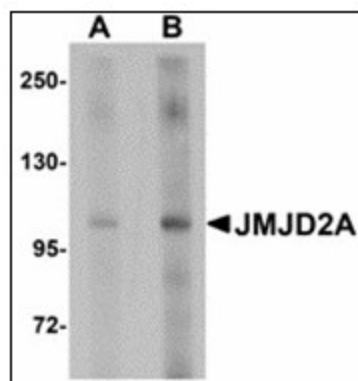
Product data:

Product Type:	Primary Antibodies
Applications:	ELISA, IHC, WB
Recommended Dilution:	ELISA. Immunohistochemistry on Paraffin Sections: 5 µg/ml. Western Blot: 1 - 2 µg/ml.
Reactivity:	Human, Mouse, Rat
Host:	Rabbit
Clonality:	Polyclonal
Immunogen:	Synthetic peptide - KLH conjugated
Specificity:	This antibody reacts to the internal region of JMJD2A.
Formulation:	PBS containing 0.02% sodium azide as preservative State: Purified State: Liquid purified Ig fraction
Concentration:	lot specific
Purification:	Immunoaffinity Chromatography
Conjugation:	Unconjugated
Storage:	Store the antibody undiluted at 2-8°C.
Stability:	Shelf life: one year from despatch.
Gene Name:	lysine demethylase 4A
Database Link:	Entrez Gene 230674 Mouse Entrez Gene 313539 Rat Entrez Gene 9682 Human O75164
Synonyms:	JHDM3A, JMJD2, KIAA0677
Protein Families:	Druggable Genome, Transcription Factors

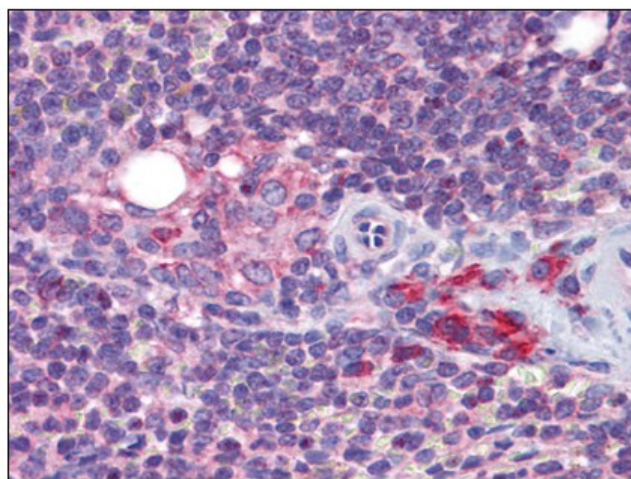


[View online »](#)

Product images:



Western blot analysis of JMJD2A in rat liver tissue lysate with JMJD2A antibody at (A) 1 and (B) 2 ug/ml.



Human Spleen: Formalin-Fixed, Paraffin-Embedded (FFPE)