

Product datasheet for **AP23897PU-N**

KAT3A / CBP (CREBBP) (C-term) Rabbit Polyclonal Antibody

Product data:

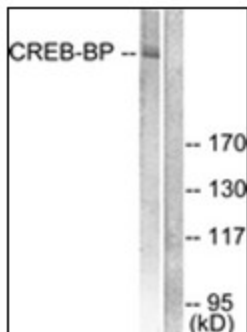
Product Type:	Primary Antibodies
Applications:	ELISA, IF, IHC, WB
Recommended Dilution:	ELISA: 1/10000. Immunofluorescence: 1/100 - 1/500. Immunohistochemistry on Paraffin Sections: 1/200. Western Blot: 1/500 - 1/1000.
Reactivity:	Human, Mouse
Host:	Rabbit
Isotype:	IgG
Clonality:	Polyclonal
Immunogen:	Synthetic peptide - KLH conjugated
Specificity:	CREB-BP Antibody detects endogenous levels of total CREB-BP protein.
Formulation:	PBS (without Mg ²⁺ , Ca ²⁺), pH 7.4, 150 mM sodium chloride containing 0.02% sodium azide as preservative and 50% glycerol as stabilizer State: Purified State: Liquid purified Ig fraction
Purification:	Immunoaffinity Chromatography
Conjugation:	Unconjugated
Storage:	Store the antibody at -20°C. Avoid repeated freezing and thawing.
Stability:	Shelf life: one year from despatch.
Gene Name:	CREB binding protein
Database Link:	Entrez Gene 12914 Mouse Entrez Gene 1387 Human Q92793
Synonyms:	CREBBP, CBP
Protein Families:	Druggable Genome



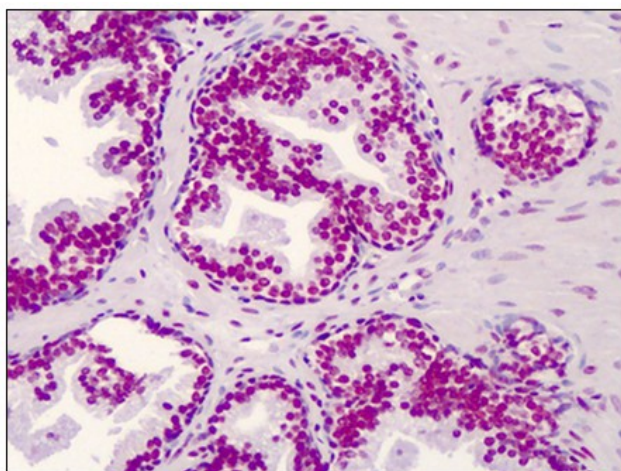
[View online »](#)

Protein Pathways:

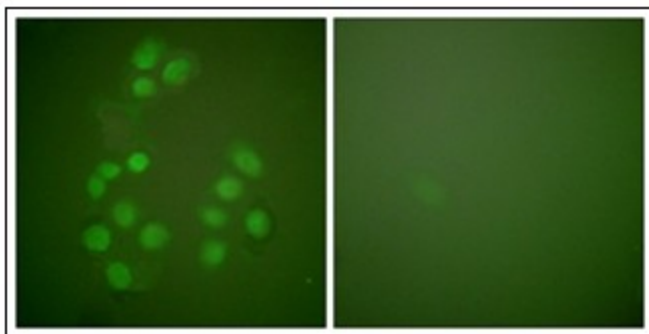
Adherens junction, Cell cycle, Huntington's disease, Jak-STAT signaling pathway, Long-term potentiation, Melanogenesis, Notch signaling pathway, Pathways in cancer, Prostate cancer, Renal cell carcinoma, TGF-beta signaling pathway, Wnt signaling pathway

Product images:


Western blot analysis of extracts from HeLa cells, treated with Insulin 0.01U/ml 15', using CREB-BP Antibody. The lane on the right is treated with the synthesized peptide.



Human Prostate: Formalin-Fixed, Paraffin-Embedded (FFPE)



Immunofluorescence analysis of A549 cells, using CREB-BP Antibody. The picture on the right is treated with the synthesized peptide.