

Product datasheet for **AP23896PU-N**

FKBP25 (FKBP3) (2-195) Rabbit Polyclonal Antibody

Product data:

Product Type:	Primary Antibodies
Applications:	IHC, WB
Recommended Dilution:	Immunohistochemistry on Paraffin Sections: 5 µg/ml. Western Blot: 1/500 - 1/3000.
Reactivity:	Bovine, Human, Mouse, Rat
Host:	Rabbit
Isotype:	IgG
Clonality:	Polyclonal
Immunogen:	Recombinant protein fragment containing a sequence corresponding to a region within amino acids 2 and 195 of Human FKBP25
Specificity:	This antibody reacts to FKBP25 at aa 2-195.
Formulation:	0.1 M Tris-glycine, pH 7 containing 20% Glycerol as stabilizer and 0.01% Thimerosal as preservative State: Aff - Purified State: Liquid purified Ig fraction
Purification:	Immunoaffinity Chromatography
Conjugation:	Unconjugated
Storage:	Store the antibody (in aliquots) at -20°C. Avoid repeated freezing and thawing.
Stability:	Shelf life: one year from despatch.
Gene Name:	FK506 binding protein 3
Database Link:	Entrez Gene 30795 Mouse Entrez Gene 2287 Human Q00688
Background:	FKBP25 / FKBP3 is a member of the immunophilin protein family, which play a role in immunoregulation and basic cellular processes involving protein folding and trafficking. This encoded protein is a cis-trans prolyl isomerase that binds the immunosuppressants FK506 and rapamycin, as well as histone deacetylases, the transcription factor YY1, casein kinase II, and nucleolin.

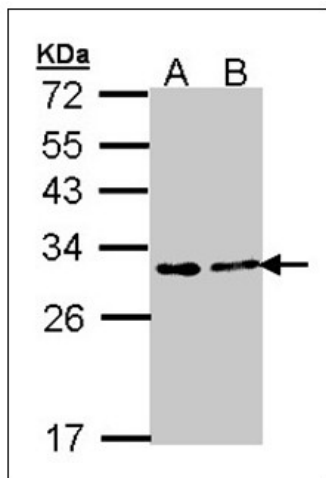


[View online »](#)

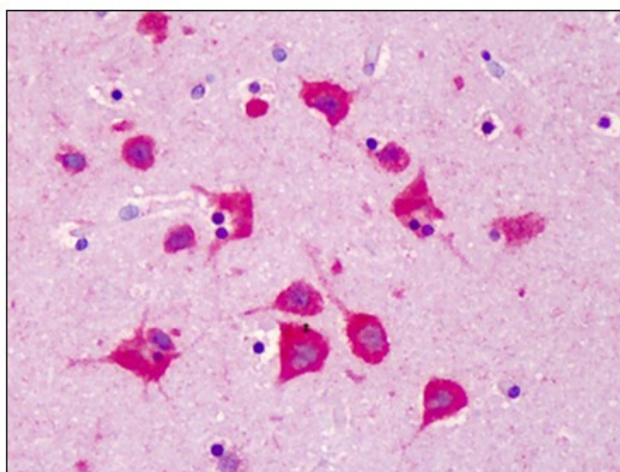
Synonyms: FKBP-3, FKBP-25

Protein Families: Druggable Genome, Stem cell - Pluripotency

Product images:



Sample (30 ug of whole cell lysate). A: A431 . B: H1299. 12% SDS PAGE. FKBP3 antibody diluted at 1/1000.



Human Brain, Cortex: Formalin-Fixed, Paraffin-Embedded (FFPE)