

## Product datasheet for **AP23894PU-N**

### **KDM3B Rabbit Polyclonal Antibody**

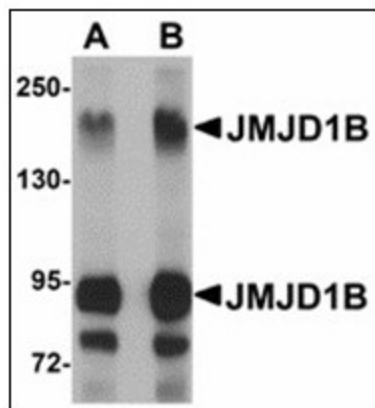
#### **Product data:**

Product Type:	Primary Antibodies
Applications:	ELISA, IHC, WB
Recommended Dilution:	<b>ELISA.</b> <b>Immunohistochemistry on Paraffin Sections:</b> 5 µg/ml. <b>Western Blot:</b> 1 - 2 µg/ml.
Reactivity:	Human, Mouse, Rat
Host:	Rabbit
Clonality:	Polyclonal
Immunogen:	Synthetic peptide - KLH conjugated
Specificity:	This antibody reacts to the internal region of JMJD1B.
Formulation:	PBS containing 0.02% sodium azide as preservative State: Purified State: Liquid purified Ig fraction
Concentration:	lot specific
Purification:	Immunoaffinity Chromatography
Conjugation:	Unconjugated
Storage:	Store the antibody undiluted at 2-8°C.
Stability:	Shelf life: one year from despatch.
Gene Name:	lysine demethylase 3B
Database Link:	<a href="#">Entrez Gene 277250 Mouse</a> <a href="#">Entrez Gene 682469 Rat</a> <a href="#">Entrez Gene 51780 Human</a> <a href="#">Q7LBC6</a>
Synonyms:	5qNCA, C5orf7, JHDM2B, KIAA1082

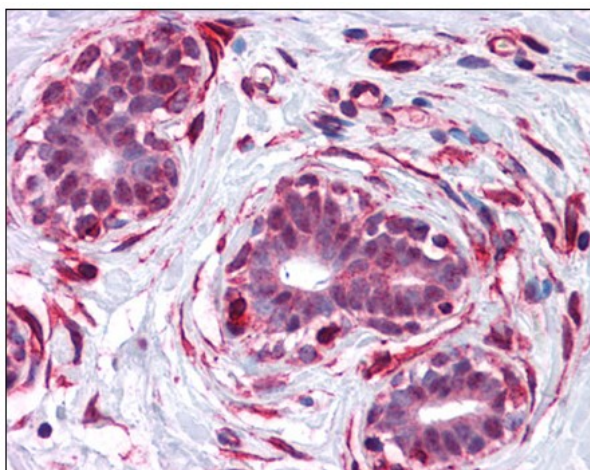


[View online »](#)

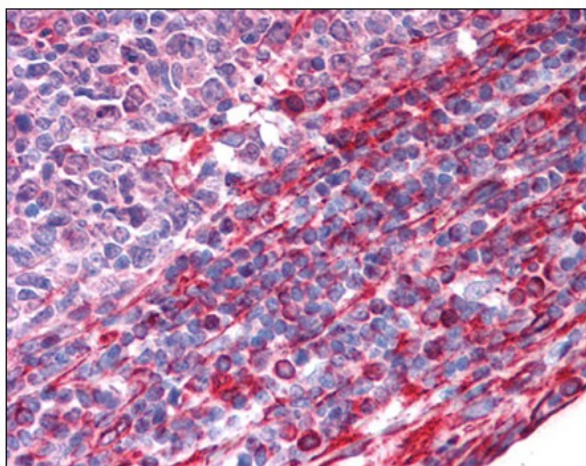
## Product images:



Western blot analysis of JMJD1B in rat liver tissue lysate with JMJD1B antibody at (A) 1 and (B) 2 ug/ml.



Human Breast: Formalin-Fixed, Paraffin-Embedded (FFPE)



Human Tonsil: Formalin-Fixed, Paraffin-Embedded (FFPE)