

Product datasheet for **AP23893PU-N**

C20orf11 (GID8) (C-term) Rabbit Polyclonal Antibody

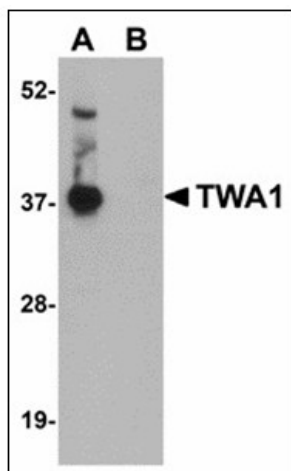
Product data:

Product Type:	Primary Antibodies
Applications:	ELISA, IHC, WB
Recommended Dilution:	ELISA. Immunohistochemistry on Paraffin Sections: 5 µg/ml. Western Blot: 1 - 2 µg/ml.
Reactivity:	Human, Mouse, Rat
Host:	Rabbit
Clonality:	Polyclonal
Immunogen:	Synthetic peptide - KLH conjugated
Specificity:	This antibody reacts to the C-term of C20orf11.
Formulation:	PBS containing 0.02% sodium azide as preservative State: Purified State: Liquid purified Ig fraction
Concentration:	lot specific
Purification:	Immunoaffinity Chromatography
Conjugation:	Unconjugated
Storage:	Store the antibody undiluted at 2-8°C.
Stability:	Shelf life: one year from despatch.
Gene Name:	GID complex subunit 8 homolog
Database Link:	Entrez Gene 76425 Mouse Entrez Gene 296466 Rat Entrez Gene 54994 Human Q9NWU2
Synonyms:	TWA1

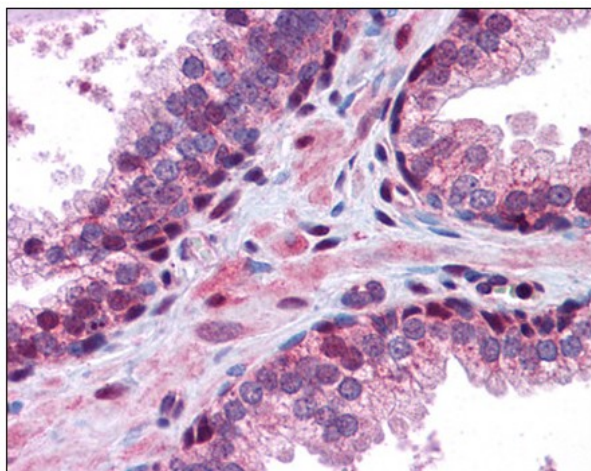


[View online »](#)

Product images:



Western blot analysis of TWA1 in human brain tissue lysate with TWA1 antibody at 1 ug/ml in (A) the absence and (B) the presence of blocking peptide.



Human Prostate: Formalin-Fixed, Paraffin-Embedded (FFPE)