

Product datasheet for **AP23889PU-N**

SCAMP4 (C-term) Rabbit Polyclonal Antibody

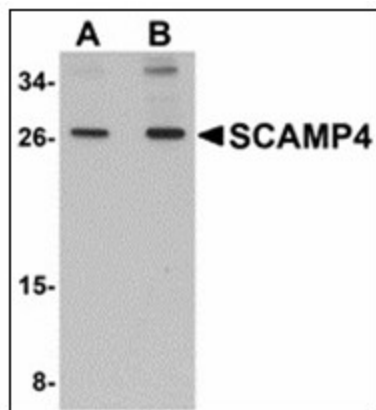
Product data:

Product Type:	Primary Antibodies
Applications:	ELISA, IHC, WB
Recommended Dilution:	ELISA. Immunohistochemistry on Paraffin Sections: 5 µg/ml. Western Blot: 1 - 2 µg/ml.
Reactivity:	Human, Mouse, Rat
Host:	Rabbit
Clonality:	Polyclonal
Immunogen:	Synthetic peptide - KLH conjugated
Specificity:	This antibody reacts to the C-term of SCAMP4.
Formulation:	PBS containing 0.02% sodium azide as preservative State: Purified State: Liquid purified Ig fraction
Concentration:	lot specific
Purification:	Immunoaffinity Chromatography
Conjugation:	Unconjugated
Storage:	Store the antibody undiluted at 2-8°C.
Stability:	Shelf life: one year from despatch.
Gene Name:	secretory carrier membrane protein 4
Database Link:	Entrez Gene 56214 Mouse Entrez Gene 65170 Rat Entrez Gene 113178 Human Q969E2
Synonyms:	FLJ33847; FLJ90105; SCAMP-4

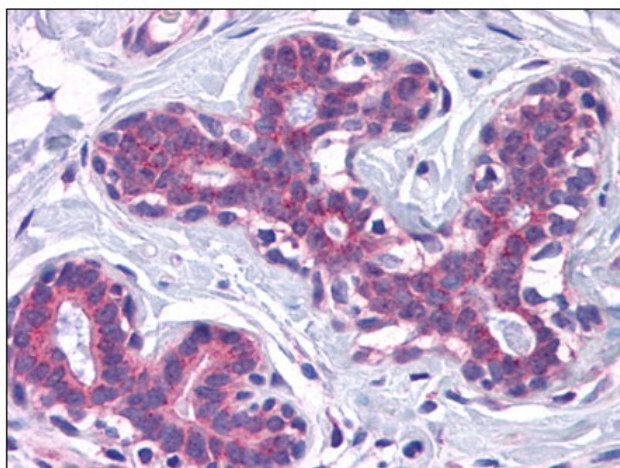


[View online »](#)

Product images:



Western blot analysis of SCAMP4 in 3T3 cell lysate with SCAMP4 antibody at (A) 1 and (B) 2 ug/ml.



Human Breast: Formalin-Fixed, Paraffin-Embedded (FFPE)